

Unika 4 colour change LED

Product number: 7063371

Configuration: luminaire individuel avec 2-fold USB A, black matt

Configuration options

7063371 | luminaire individuel avec 2-fold USB A, black matt

- ✓ Surface-mounted lamp
- ✓ 2700 K warm white to 6500 K cold white
- ✓ 3 watts

Surface mounted lamp. Plastic body, round, illumination without visible LED points with integrated double USB charger.— lamp 3 watts, 24 V

— USB 20 watts, 24 V

— setting of the light colour to 2700 K warm white or 6500 K neutral white (only in combination with Unika 2 LED Touch switch and dimmer 7063369)

— memory function: the last setting is stored

— dimmer function: brightness continuously dimmable

— max. 80 lumen/watt

— 2 x USB charger type A, 5 VDC, IA/I out: 2 x 2000 mA

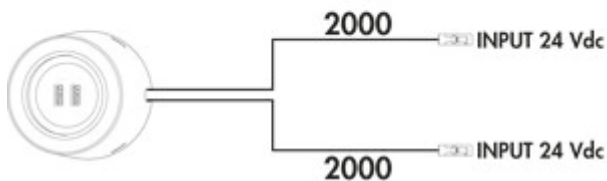
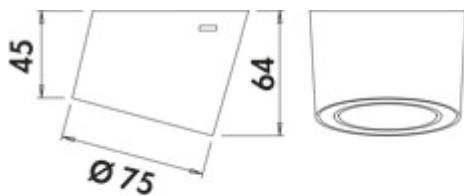
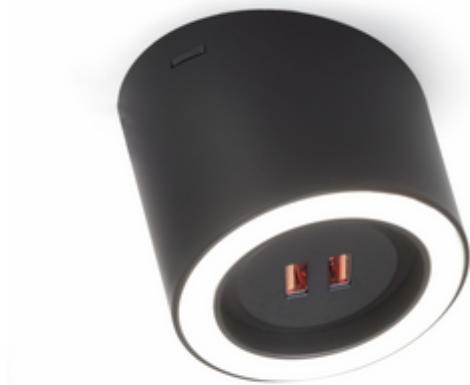
— 2000 mm supply line, 2 x 24 V

— connection to LED converter (7062250 or 7062251)

— MEC LED system compatible

This product contains a light source with the energy efficiency class D.

Please take into account the 20 watt charger power of the converter.



[more infos...](#)

Technical data

Article type	Luminaire	USB version	2 x USB charger type A, 5 VDC, IA/I out: 2 x 2000 mA
Energy efficiency class	E	Colour temperature	2700 K warm white to 6500 K cold white
Transformer / converter required	Yes, must be ordered separately	Colour temperature adjustable	stepless
Mounting/Fixing	surface mounting Base unit installation (wall unit/shelf)	Type of dimming	brightness continuously dimmable
Material housing	plastic	Illuminant type	LED
Surface/coating	matt	Replaceable illuminant	No
Shape	round	Light yield	max. 154 lumen/watt
Memory function	Yes	Homogeneous light field without visible LED points	Yes
Length of the supply line (primary)	2.000 mm	Design	Surface-mounted lamp
Outer diameter	75 mm	Dimming function (composite)	brightness continuously dimmable
Illuminant included	Yes	Illuminant power	3 watts
Housing colour	black matt		

Accessories

7062252	LED connection line 24, Connection line/element, white, L 2000 mm
7061400	MEC Driver LED converter, 18 W, 12/24 V
7061401	MEC Driver LED converter, 36 W, 12/24 V
7061403	MEC Driver LED converter, 60/72 W, 12/24 V
7061405	MEC Driver LED converter, 120 W, 24 V
7061407	MEC Driver LED distributor module, Distributor, 12 V
7061408	MEC Driver LED distributor module, Distributor, 24 V