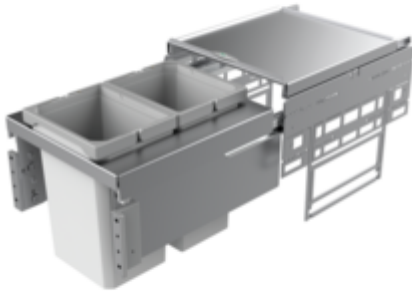


## Cox<sup>®</sup> Base 360 S/400-2

Product number: 8012300

Configuration: without bio lid, light grey, H 360 mm



### Configuration options

8012300 | without bio lid, light grey, H 360 mm

8012313 | with bio lid, light grey, H 360 mm

8013300 | without bio lid, anthracite, H 360 mm

8013313 | with bio lid, anthracite, H 360 mm

✓ Front pull-out system

✓ full pull-out

✓ 20 l

With pull-out complete lid.

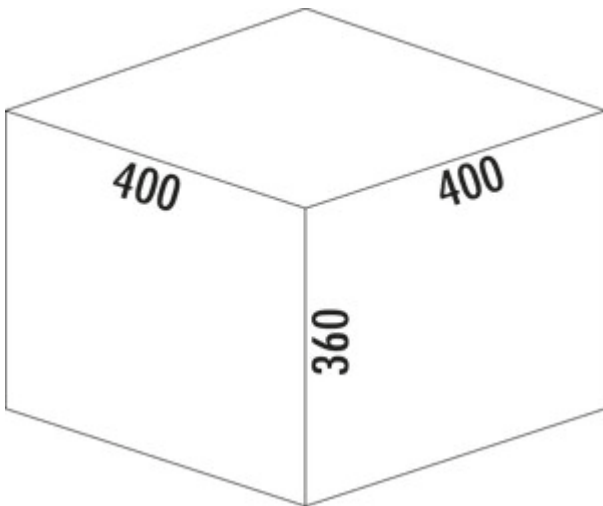
— guide rail depth 470 mm

— waste capacity 20 (2 x 10) liters

— technology: full pull-out

— fitting: cabinet wall and front panel

— with soft retraction and damping



[more infos...](#)

### Technical data

Article type	Waste collection system	Total volume	20 l
Width	400 mm	Volume/content container 1	10 l
CE marking on the product	No	Volume/content container 2	10 l
Mounting/Fixing	cabinet wall front panel	Soft closing	Yes
Cabinet width	400 mm	Colour guide	silver
Shape	angular	Design	Front pull-out system
Material container	plastic	Volume/Content container	10/10
Colour total cover	silver	Organic lid	No
Cover	Yes	Retractable total cover	Yes
Lid type(s)	Complete lid	Guide rail depth	470 mm
Number of containers	2	Locking mechanism	With damper
Opening technology	full pull-out		

### Accessories

8011312	Bio-lid, Accessory, light grey, for 4/ 6/ 7/ 10/ 12.5 liters
8013312	Bio-lid, Accessory, anthracite, for 4/ 6/ 7/ 10/ 12.5 liters
8011178	Bio-filter retrofitting set, Accessory, black

### Spare Parts

8012320	Cox® system container, Single bucket, light grey, 10 liters
8010153	Complete lid, Accessory, silver
8013153	Complete lid, Accessory, anthracite
8013320	Cox® system container, Single bucket, anthracite, 10 liters

### Recommendations

8012309	Cox® Base single bucket, Single bucket, light grey
8013309	Cox® Base single bucket, Single bucket, anthracite

Installation dimensions (PDF)

Pos.	Abbildung	Anz.	Benennung	Artikel-Nr.	Material	RAL
1		4	Möbelfüßschraube	801 0155	Stahl verzinkt	7042
2		4	Anlenkungsschraube	801 0155	Zink-Druckguss	
3		4	Muller	801 0150	Stahl verzinkt	
4		1	Frontwinkel L	801 0150	Stahl verzinkt	
5		1	Frontwinkel R	801 0150	Stahl verzinkt	
6		1	Abdeckung L	801 0161	PA 6	7042
7		1	Abdeckung R	801 0161	PA 6	7042
8		2	Ersatzroller niedrigw. 10 L	801 0203	PP + PA 6 GF 30%	7047 + 7042
9		1	Gesamtdetail silber 400	801 0153	DC01/DC012	9006
10		1	Rahment 400_400_118	801 0151	DC01	9006
11		1	Schiene Grass Nova pro 450 L	801 0026	Stahl verzinkt	
12		1	Schiene Grass Nova pro 450 R	801 0026	Stahl verzinkt	
13		2	Montageplatte	801 0007	ABS	7042

**Kundenzzeichnung**

**MADE IN GERMANY**

**Benennung/Description**  
Cox Base 360 S\_400-2

**Produktionsnummer**  
8012300

**Naber**