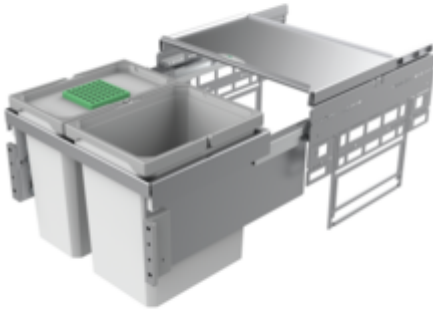


## Cox<sup>®</sup> Base 360 K/500-2

Product number: 8012401

Configuration: with bio lid, light grey, H 360 mm



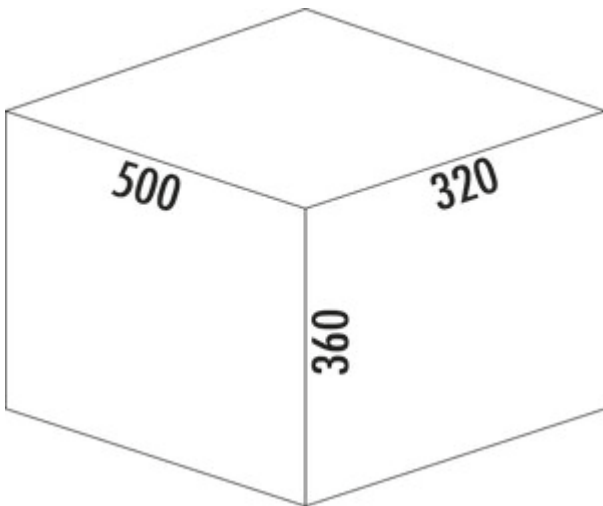
### Configuration options

- 8012400 | without bio lid, light grey, H 360 mm
- 8012401 | with bio lid, light grey, H 360 mm
- 8013400 | without bio lid, anthracite, H 360 mm
- 8013401 | with bio lid, anthracite, H 360 mm

- ✓ Front pull-out system
- ✓ full pull-out
- ✓ 27.5 l

With pull-out complete lid.

- guide rail depth 470 mm
- waste capacity 27.5 (1 x 15.5/1 x 12) liters
- technology: full pull-out
- fitting: cabinet wall and front panel
- with soft retraction and damping
- installation depth 320 mm



[more infos...](#)

### Technical data

|                           |                             |                            |                       |
|---------------------------|-----------------------------|----------------------------|-----------------------|
| Article type              | Waste collection system     | Total volume               | 27.5 l                |
| Width                     | 500 mm                      | Volume/content container 1 | 15,5 l                |
| CE marking on the product | No                          | Volume/content container 2 | 12 l                  |
| Mounting/Fixing           | cabinet wall<br>front panel | Soft closing               | Yes                   |
| Cabinet width             | 500 mm                      | Colour guide               | grey                  |
| Shape                     | angular                     | Colour container lid       | light grey/green      |
| Frame colour              | silver                      | Design                     | Front pull-out system |
| Installation depth        | 320 mm                      | Volume/Content container   | 15,5/12               |
| Material container        | plastic                     | Organic lid                | Yes                   |
| Colour total cover        | silver                      | Retractable total cover    | Yes                   |
| Cover                     | Yes                         | Guide rail depth           | 470 mm                |
| Lid type(s)               | Complete lid                | Biode lid bucket sizes     | 12 l                  |
| Number of containers      | 2                           | Locking mechanism          | With damper           |
| Opening technology        | full pull-out               |                            |                       |

### Accessories

|         |   |
|---------|---|
| 8012343 | Bio-lid, Accessory, light grey, for 7.5/ 9/ 12 liters |
| 8013343 | Bio-lid, Accessory, anthracite, for 7.5/ 9/ 12 liters |
| 8012367 | Cox Cick®, Accessory, dark grey/chrome matt           |

### Spare Parts

|         |   |
|---------|---|
| 8012333 | Cox® system container, Single bucket, light grey, 12 liters   |
| 8012334 | Cox® system container, Single bucket, light grey, 15,5 liters |
| 8012345 | Complete lid, Accessory, silver                               |
| 8011178 | Bio-filter retrofitting set, Accessory, black                 |
| 8013334 | Cox® system container, Single bucket, anthracite, 15,5 liters |
| 8013333 | Cox® system container, Single bucket, anthracite, 12 liters   |
| 8013345 | Complete lid, Accessory, anthracite                           |

### Recommendations

|         |  |
|---------|--|
| 8012309 | Cox® Base single bucket, Single bucket, light grey |
| 8013309 | Cox® Base single bucket, Single bucket, anthracite |

Installation dimensions (PDF)

| Pos. | Abbildung | Anz. | Benennung                     | Artikel-Nr. | Material        | RAL         |
|------|-----------|------|-------------------------------|-------------|-----------------|-------------|
| 1    |           | 2    | Mörtelgebinde                 | 801 0007    | ABS             | 7042        |
| 2    |           | 1    | Ersatzteilier hellgrau 15,5 L | 801 2304    | PP + PA6 GF-30% | 7047 + 7042 |
| 3    |           | 1    | Frontblech L                  | 801 0150    | Stahl verzinkt  |             |
| 4    |           | 1    | Abdeckung R                   | 801 0161    | PA 6            | 7042        |
| 5    |           | 1    | Abdeckung L                   | 801 0161    | PA 6            | 7042        |
| 6    |           | 1    | Frontblech R                  | 801 0150    | Stahl verzinkt  |             |
| 7    |           | 4    | Mörtelgebinde                 | 801 0150    | Stahl verzinkt  |             |
| 8    |           | 4    | Mörtel                        | 801 0155    | Stahl verzinkt  |             |
| 9    |           | 4    | Ankerungsstange               | 801 0155    | Zink-Druckguss  |             |
| 10   |           | 1    | Schiene Glass Nova pro 450 L  | 801 0026    | Stahl verzinkt  |             |
| 11   |           | 1    | Schiene Glass Nova pro 450 R  | 801 0026    | Stahl verzinkt  |             |
| 12   |           | 1    | Rahmen Silber 500, 310, 2a    |             | DC01            | 9006        |
| 13   |           | 1    | Ersatzteilier hellgrau 12 L   | 801 2303    | PP + PA6 GF-30% | 7047 + 7042 |
| 14   |           | 1    | Gesamtdeckel Silber 500       | 801 2345    | DC01/DO12       | 9006        |
| 15   |           | 1    | Bindeckel für 7,5, 9 und 12 L | 801 2343    | PP              | 7047        |

|  |  |                  |  |
|--|--|------------------|--|
| Kundenzzeichnung   |  | MATERIAL         |  |
| Naber GmbH<br>Enschedestr. 24<br>DE-48529 Nordhorn<br>Tel. +49 5921 704-0<br>Fax +49 5921 704-140<br>naber@naber.com |  | Naber<br>8012401 |  |