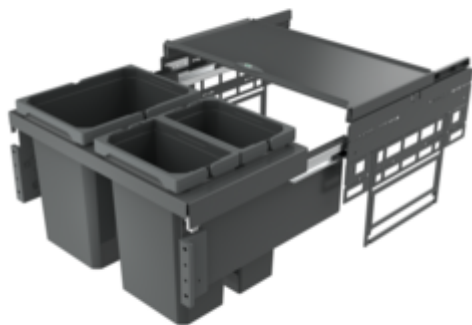


Cox[®] Base 360 K/600-3

Product number: 8013489

Configuration: without bio lid, anthracite, H 360 mm



Configuration options

8012489 | without bio lid, light grey, H 360 mm

8012509 | with bio lid, light grey, H 360 mm

8013489 | without bio lid, anthracite, H 360 mm

8013509 | with bio lid, anthracite, H 360 mm

✓ Front pull-out system

✓ full pull-out

✓ 30.5 l

With pull-out complete lid.

— guide rail depth 470 mm

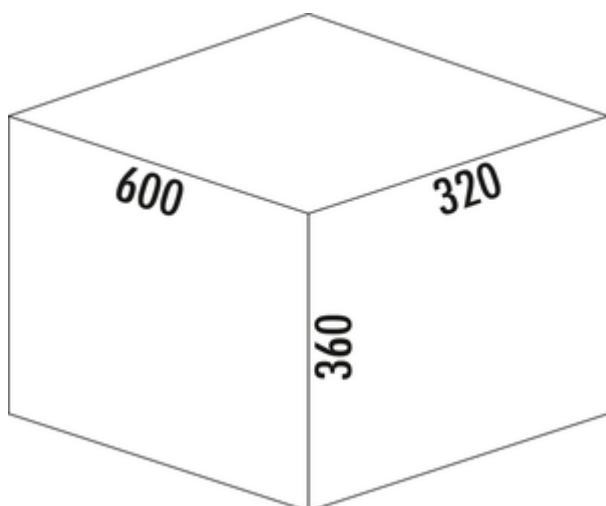
— waste capacity 30,5 (1 x 15,5/2 x 7,5) l

— technology: full pull-out

— fitting: cabinet wall and front panel

— **with soft retraction and damping**

— installation depth 320 mm



[more infos...](#)

Technical data

Article type	Waste collection system	Total volume	30.5 l
Height	360 mm	Volume/content container 1	15,5 l
Width	600 mm	Volume/content container 2	7,5 l
Mounting/Fixing	cabinet wall front panel	Volume/content container 3	7,5 l
Cabinet width	600 mm	Soft closing	Yes
Shape	angular	Design	Front pull-out system
Installation depth	320 mm	Volume/Content container	15,5/7,5/7,5
Material container	plastic	Organic lid	No
Lid type(s)	Complete lid	Retractable total cover	Yes
Number of containers	2	Guide rail depth	470 mm
Opening technology	full pull-out	Locking mechanism	With damper

Spare Parts

8013495	Cox® system container, Single bucket, anthracite, 7.5 liters
8012495	Cox® system container, Single bucket, light grey, 7.5 liters
8012334	Cox® system container, Single bucket, light grey, 15,5 liters
8013334	Cox® system container, Single bucket, anthracite, 15,5 liters
8011178	Bio-filter retrofitting set, Accessory, black

Recommendations

8012309	Cox® Base single bucket, Single bucket, light grey
8013309	Cox® Base single bucket, Single bucket, anthracite

Dimensional sketch (PDF)

The drawing shows a perspective view of a pull-out unit with dimensions 562 (width) and 464 (depth). A detailed view of the front panel shows a width of 696. A 3D exploded view shows the unit with numbered callouts 1 through 14. A table below lists the parts and their specifications.

Pos.	Abbildung	Anz.	Benennung	Artikel-Nr.	Material	RAL
1		2	Montageplatte anfranziert	801 3307	ABS	7012
2		1	Frontblech L	801 0150	Stahl verzinkt	
3		1	Abdeckung L anfranziert	801 3161	PA 6	7012
4		1	Frontblech R	801 0150	Stahl verzinkt	
5		1	Abdeckung R anfranziert	801 3161	PA 6	7012
6		4	Mischgelenkschraube		Stahl verzinkt	
7		4	Mutter		Stahl verzinkt	
8		4	Anverlängerungsschraube	801 0155	Zink-Druckguss	
9		1	Schiene Glas Nova pro 450 L	801 0026	Stahl verzinkt	
10		1	Schiene Glas Nova pro 450 R	801 0026	Stahl verzinkt	
11		1	Ersatzleiste anfranziert 15 S/L	801 3304	PP + PA6 GF 30%	7012
12		1	Geständnisblech anfranziert 600	801 3346	DC01/10D12	7012
13		1	Rahmleiste anfranziert 600, 310, 230	801 3346	DC01	7012
14		2	Ersatzleiste anfranziert 7 S/L	801 3405	PP + PA6 GF 30%	7012

Customer drawing: Kundenzzeichnung

Material: Material

Dimensions: 153

Ordering information: Best.-Beschreibung: Cox Base 360 K_600-3

Article number: 8013489

Manufacturer: Naber