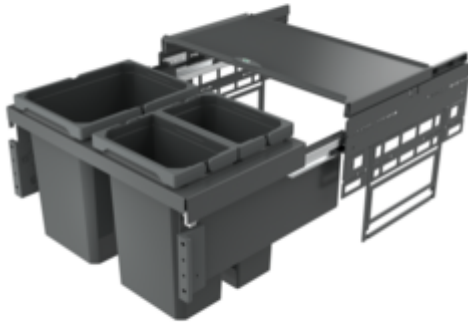


Cox[®] Base 360 K/600-3

Product number: 8013489

Configuration: without bio lid, anthracite, H 360 mm



Configuration options

8012489 | without bio lid, light grey, H 360 mm

8012509 | with bio lid, light grey, H 360 mm

8013489 | without bio lid, anthracite, H 360 mm

8013509 | with bio lid, anthracite, H 360 mm

✓ Front pull-out system

✓ full pull-out

✓ 30.5 l

With pull-out complete lid.

— guide rail depth 470 mm

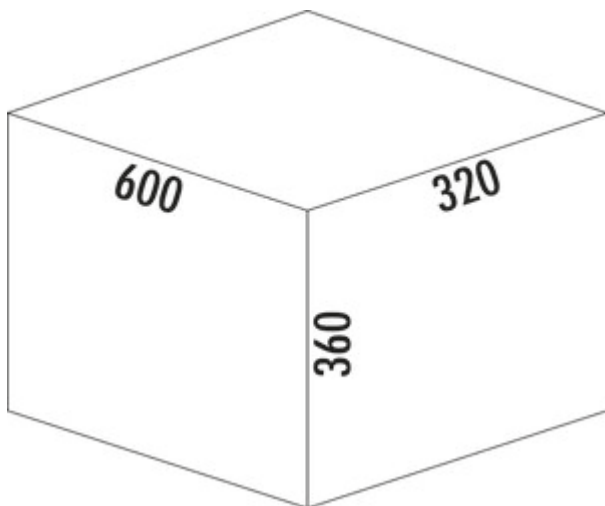
— waste capacity 30,5 (1 x 15.5/2 x 7.5) liters

— technology: full pull-out

— fitting: cabinet wall and front panel

— with soft retraction and damping

— installation depth 320 mm



[more infos...](#)

Technical data

Article type	Waste collection system	Total volume	30.5 l
Width	600 mm	Volume/content container 1	15,5 l
CE marking on the product	No	Volume/content container 2	7,5 l
Mounting/Fixing	cabinet wall front panel	Volume/content container 3	7,5 l
Cabinet width	600 mm	Soft closing	Yes
Shape	angular	Design	Front pull-out system
Installation depth	320 mm	Volume/Content container	15,5/7,5/7,5
Material container	plastic	Organic lid	No
Lid type(s)	Complete lid	Retractable total cover	Yes
Number of containers	2	Guide rail depth	470 mm
Opening technology	full pull-out	Locking mechanism	With damper

Accessories

8012367	Cox Cick®, Accessory, dark grey/chrome matt
8012369	Cox Cick-E® 600 K, Accessory, dark grey/chrome matt
8013497	Bio lid, Accessory, anthracite, for 7.5 liters
8012497	Bio lid, Accessory, light grey, for 7.5 litres

Spare Parts

8013495	Cox® system container, Single bucket, anthracite, 7.5 liters
8012495	Cox® system container, Single bucket, light grey, 7.5 liters
8012334	Cox® system container, Single bucket, light grey, 15,5 liters
8013334	Cox® system container, Single bucket, anthracite, 15,5 liters
8011178	Bio-filter retrofitting set, Accessory, black

Recommendations

8012309	Cox® Base single bucket, Single bucket, light grey
8013309	Cox® Base single bucket, Single bucket, anthracite

Installation dimensions (PDF)

Pos.	Abbildung	Anz.	Benennung	Artikel-Nr.	Material	RAL
1		2	Montageplatte anfranzi	8013307	ABS	7012
2		1	Frontfeld L	8010150	Stahl verzinkt	
3		1	Abdeckung L anfranzi	8013161	PA 6	7012
4		1	Frontfeld R	8010150	Stahl verzinkt	
5		1	Abdeckung R anfranzi	8013161	PA 6	7012
6		4	Mischgelenkschraube		Stahl verzinkt	
7		4	Mutter		Stahl verzinkt	
8		4	Ankerungsschraube	8010155	Zink-Druckguss	
9		1	Schiene Glas Nova pro 450 L	8010026	Stahl verzinkt	
10		1	Schiene Glas Nova pro 450 R	8010026	Stahl verzinkt	
11		1	Ersatzleiste anfranzi 15 S/L	8013304	PP + PA6 GF 30%	7012
12		1	Geständnisfeld anfranzi 600	8013346	DC01/1012	7012
13		1	Rahmen anfranzi 600, 310, 230		DC01	7012
14		2	Ersatzleiste anfranzi 7 S/L	8013405	PP + PA6 GF 30%	7012

Kundenzzeichnung

MAKIN in the

Compliant with the requirements of the European Norm EN 15189 for the use of the product in the kitchen.

MAKIN in the

Compliant with the requirements of the European Norm EN 15189 for the use of the product in the kitchen.

MAKIN in the

Compliant with the requirements of the European Norm EN 15189 for the use of the product in the kitchen.

MAKIN in the

Compliant with the requirements of the European Norm EN 15189 for the use of the product in the kitchen.

MAKIN in the

Compliant with the requirements of the European Norm EN 15189 for the use of the product in the kitchen.

MAKIN in the

Compliant with the requirements of the European Norm EN 15189 for the use of the product in the kitchen.

MAKIN in the

Compliant with the requirements of the European Norm EN 15189 for the use of the product in the kitchen.

MAKIN in the

Compliant with the requirements of the European Norm EN 15189 for the use of the product in the kitchen.

MAKIN in the

Compliant with the requirements of the European Norm EN 15189 for the use of the product in the kitchen.

MAKIN in the

Compliant with the requirements of the European Norm EN 15189 for the use of the product in the kitchen.