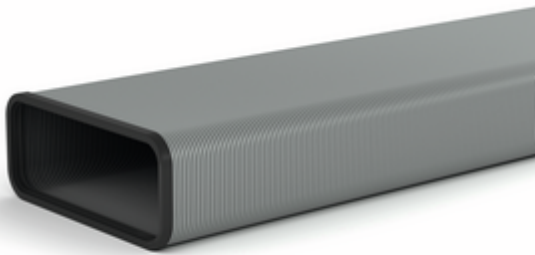


STEEL flow SF-VRO flex 150 flat duct

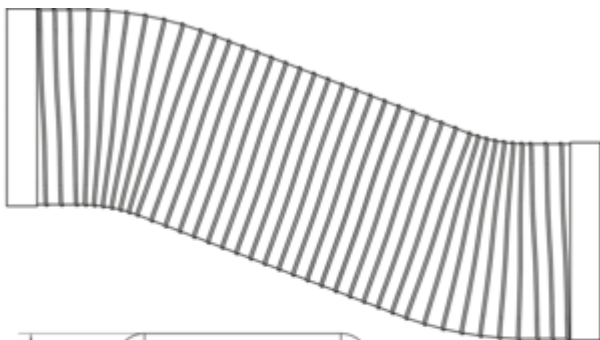


Product number: 4061002
 Configuration: L 1000 mm, aluminium

Configuration options

4061001 | L 500 mm, aluminium
 4061002 | L 1000 mm, aluminium

- ✓ Ventilation pipe
 - ✓ plug-in system
- Ventilation pipe, flexible.
- can be shortened
 - connection size metal duct 216 x 83 mm (with seal)
 - 2 SF profile linings pre-assembled
 - can be used for, e.g. bends (



[more infos...](#)

Technical data

Article type	Ventilation pipe	Mounting/Fixing	plug-in system
Brand	STEEL flow	Note	2 SF profile linings pre-assembled can be used for, e.g. bends (<90°) or parallel offsetting after removing the profile seal, connection to a flat plastic duct is possible
Height	97 mm	Shape	angular
Width	1.000 mm	Outer diameter	150 mm
Material	aluminium	Output drive	angular
Properties	can be shortened flexible	Ventilation system	COMPAIR STEEL flow® 150

