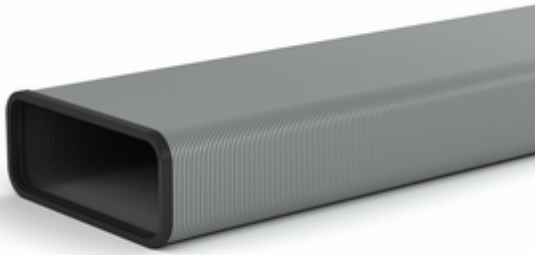


STEEL flow SF-VRO flex 150 flat duct



Product number: 4061002

Configuration: L 1000 mm, aluminium

Configuration options

4061001 | L 500 mm, aluminium

4061002 | L 1000 mm, aluminium

✓ Ventilation pipe

✓ plug-in system

Ventilation pipe, flexible.

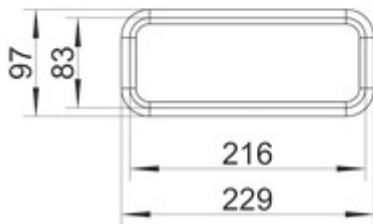
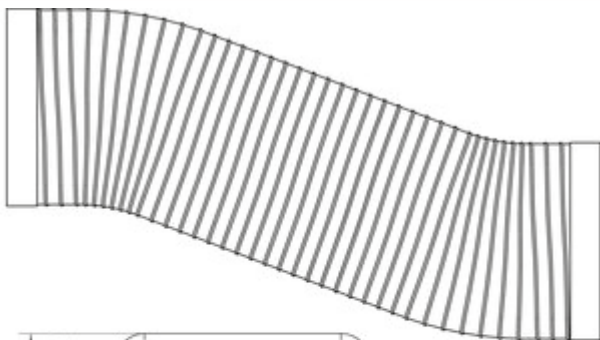
— can be shortened

— connection size metal duct 216 x 83 mm (with seal)

— 2 SF profile linings pre-assembled

— can be used for, e.g. bends (<90°) or parallel offsetting

— after removing the profile seal, connection to a flat plastic duct is possible

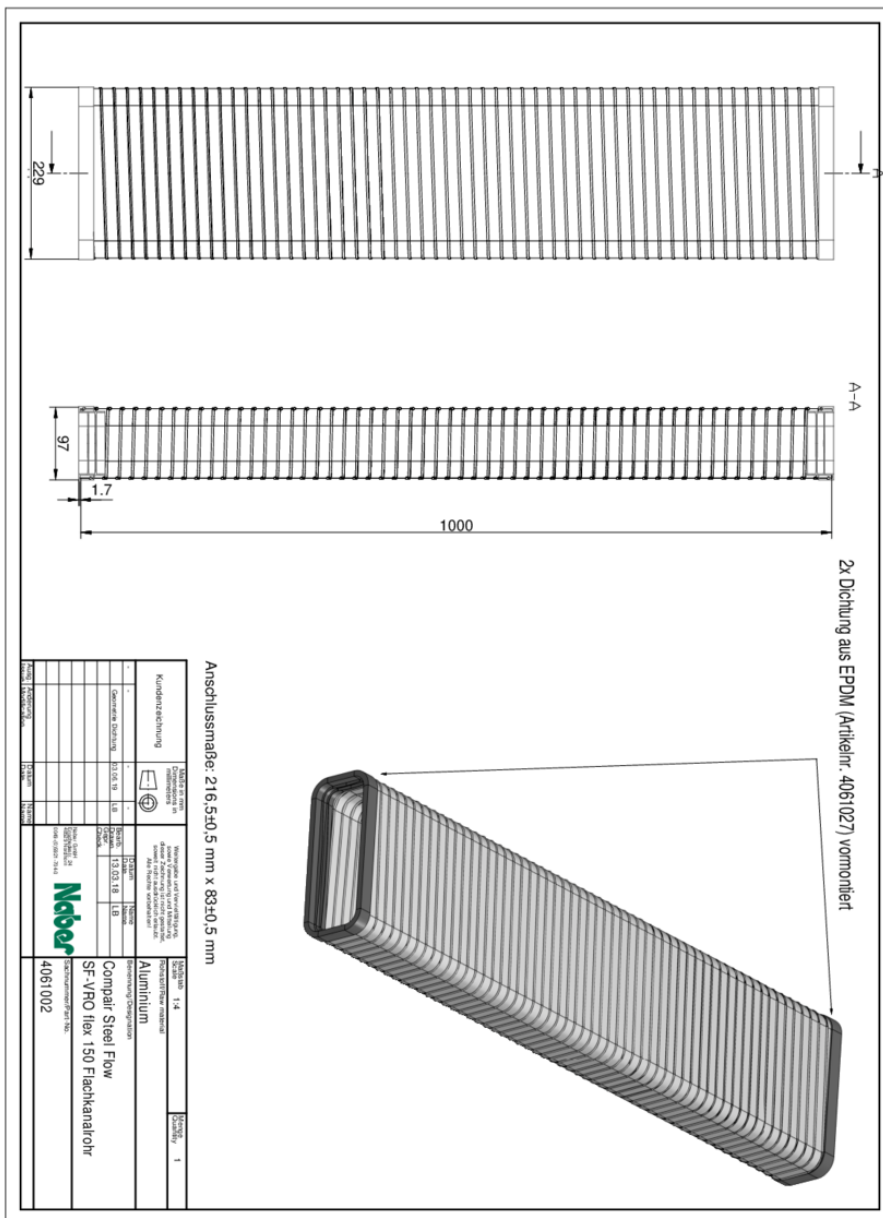


[more infos...](#)

Technical data

Article type	Ventilation pipe	Note	2 SF profile linings pre-assembled can be used for, e.g. bends (<90°) or parallel offsetting after removing the profile seal, connection to a flat plastic duct is possible
Brand	STEEL flow	Shape	angular
Width	1.000 mm	Outer diameter	150 mm
Material	aluminium	Output drive	angular
Properties	can be shortened flexible	Ventilation system	COMPAIR STEEL flow [®] 150
Mounting/Fixing	plug-in system		

Dimensional sketch (PDF)



Kundenzzeichnung		Naber		Naber	
-		-		-	
General Drawing	21.04.19	LEB	15.03.19	LEB	
Naber		Naber		Naber	
Aluminium		Aluminium		Aluminium	
Compair Steel Flow		Compair Steel Flow		Compair Steel Flow	
SF-VPO flex 150 Flachkanalrohr		SF-VPO flex 150 Flachkanalrohr		SF-VPO flex 150 Flachkanalrohr	
4061002		4061002		4061002	