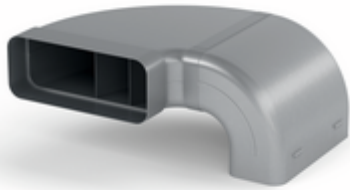


STEEL flow SF 150 pipe set for downdraft ventilation



Product number: 4061024

Configuration: galvanized steel

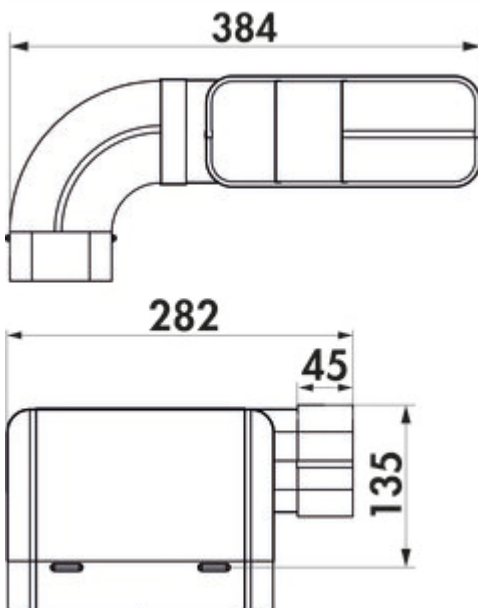
Configuration options

4061024 | galvanized steel

- ✓ Connecting element
- ✓ installation in the wall
- ✓ plug-in system

The pipe set allows for a space-saving arrangement of the exhaust pipes at extractor hoods with downdraft or hob ventilation.

- connection size (222 x 89 mm) for direct connection to the extraction system
- guidance direction (left/right) can be changed by replugging
- suitable for flat ducts SF-VRO flex and SF-VRO



[more infos...](#)

Technical data

Article type	Connecting element	Surface/coating	galvanised
Brand	STEEL flow	Shape	angular
Warranty	5-year Naber warranty (except for wear parts); the general warranty conditions of Naber GmbH apply.	Outer diameter	150 mm
Width	384 mm	Connection dimension	connection size (222 x 89 mm) for direct connection to the extraction system
Material	galvanized steel	System dimension	150
Mounting/Fixing	installation in the wall plug-in system	Output drive	angular
Note	guidance direction (left/right) can be changed by replugging	Ventilation system	COMPAIR STEEL flow® 150
Suitable for	suitable for flat ducts SF-VRO flex and SF-VRO		

