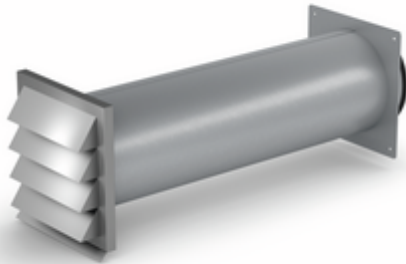


## STEEL flow SF-Klima-E 150 wall conduct



Product number: 4061030

Configuration: galvanized steel, stainless steel

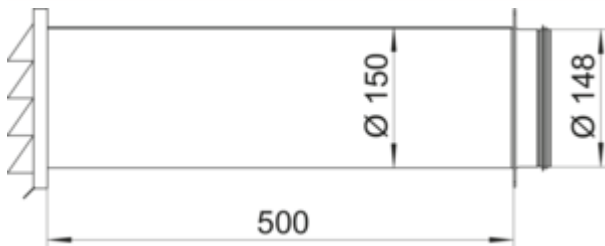
### Configuration options

4061030 | galvanized steel, stainless steel

- ✓ Wall sleeve
- ✓ installation in the wall
- ✓ plug-in system

**Stainless steel external blind** with backflow trap.

- can be shortened
- installation depth 500 mm, can be shortened to 190 mm
- wall penetration  $\varnothing$  ca. 155 mm
- suitable for round pipes SR-R flex and SR-R
- connection to a plastic round pipe possible



[more infos...](#)

### Technical data

Article type	Wall sleeve	Shape	angular
Brand	STEEL flow	Outer diameter	150 mm
Width	500 mm	Diameter wall opening	155 mm
Material	galvanized steel	Connection diameter	148 mm
Properties	can be shortened	Installation depth	500 mm
Mounting/Fixing	installation in the wall plug-in system	Wall box version	stainless steel external blind with backflow trap
Note	connection to a plastic round pipe possible	Blind version	with backpressure shutter
Suitable for	suitable for round pipes SR-R flex and SR-R	System dimension	150
Surface/coating	galvanised	Output drive	round
Shortenability	can be shortened to 190 mm	Ventilation system	COMPAIR STEEL flow® 150

