



## Connero 2

Product number: 3011109  
 Configuration: black matt, H 870 mm

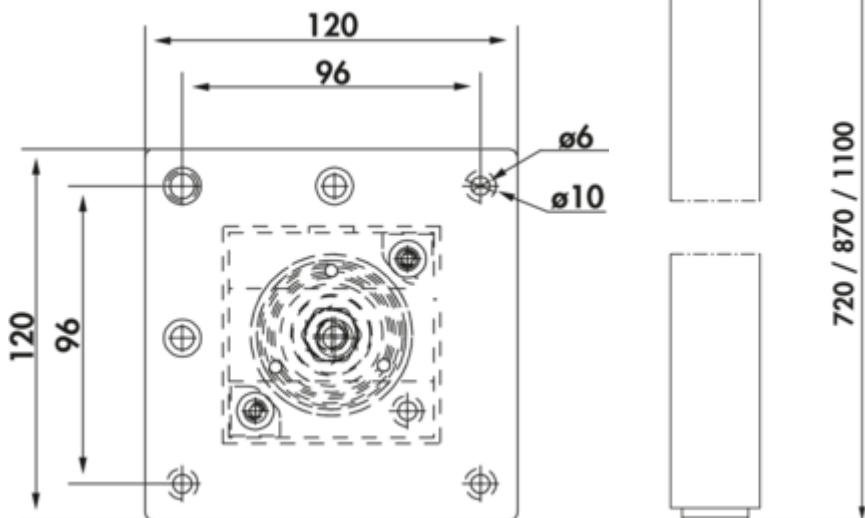
### Configuration options

- 3011108 | black matt, H 720 mm
- 3011109 | black matt, H 870 mm
- 3011110 | black matt, H 1100 mm

- ✓ Support foot
- ✓ square
- ✓ straight

Supporting foot. Square, cannot be shortened.

- height plus 5 mm height adjustment
- tube 70 x 70 mm
- can be mounted flush with the corner or centrally
- **with 2 integrated earthed plug sockets**
- supply line 1900 mm, 3-core, free ends
- bearing capacity approx. 120 kg



[more infos...](#)

### Technical data

Article type	Support foot	Tube dimension	70 x 70 mm
Height	870 mm	Height adjustment	5 mm
Properties	cannot be shortened	Support element version	straight
Shape	square	Number of integrated SCHUKO sockets	2
Length of the supply line (primary)	1.900 mm	Mounting height on console	2 mm
Carrying capacity	120 kg		

Dimensional sketch (PDF)

