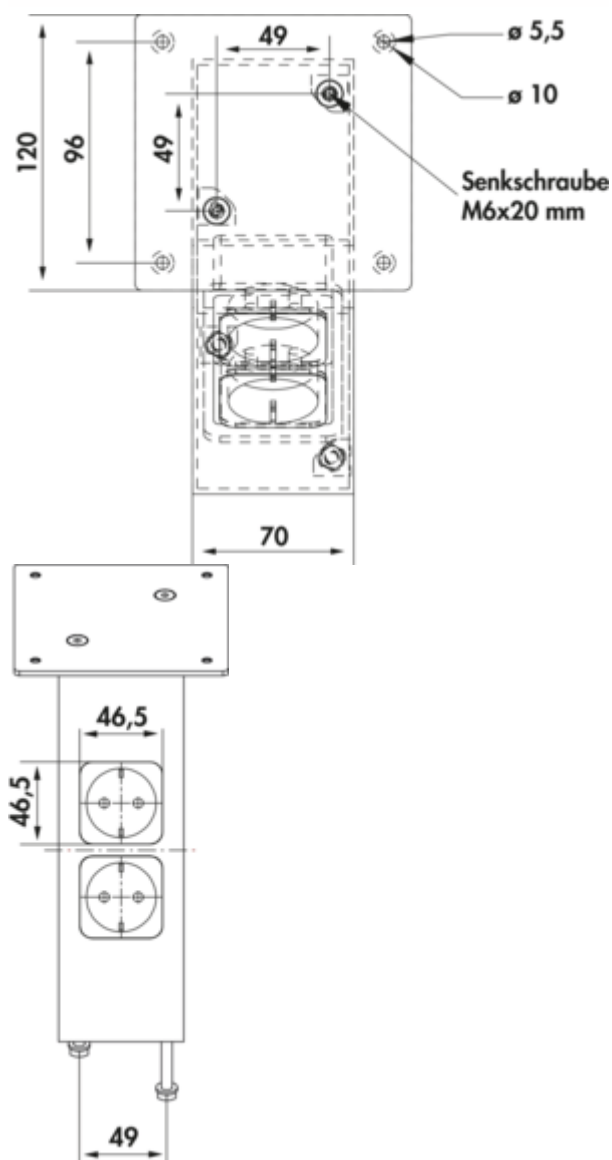


## Connero 2 slanted

Product number: 3021195  
 Configuration: black matt, H 170 mm

**Configuration options**  
 3021195 | black matt, H 170 mm



- ✓ Console
- ✓ square
- ✓ slanted

Console. With mounting plat.

- slanted
- aluminium profile 70 x 70 mm
- with 2 integrated earthing contact sockets
- supply line 1500 mm, 3-wire, free ends
- connection through the worktop
- max. load per pair approx. 60 kg given even distribution, max. spacing of the consoles of 900 mm and max. projection of the plates of 250 mm



[more infos...](#)

## Technical data

Article type	Console	With mounting plate	Yes
Height	170 mm	Carrying capacity	max. load per pair approx. 60 kg given even distribution, max. spacing of the consoles of 900 mm and max. projection of the plates of 250 mm
Width	70 mm	Support element version	slanted
Properties	cannot be shortened	Number of integrated SCHUKO sockets	2
Shape	square	Mounting height on console	2 mm
Length of the supply line (primary)	1.900 mm		

