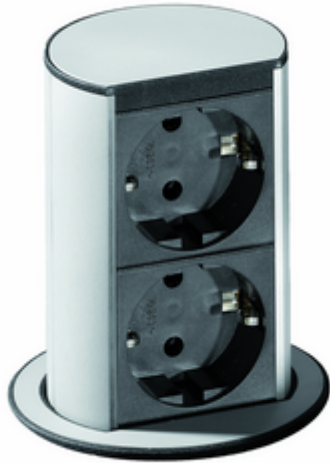


## Elevator 2



Product number: 7053065  
Configuration: with earthed plug sockets

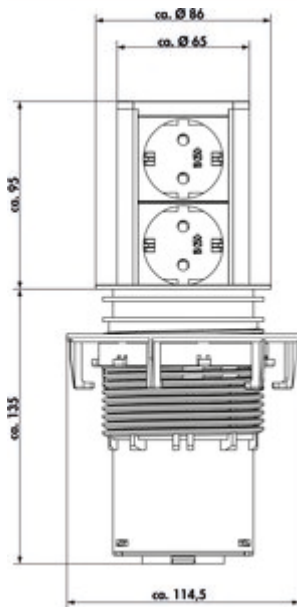
### Configuration options

7053065 | with earthed plug sockets

- ✓ Retractable socket element
- ✓ 2 x earthed plug socket
- ✓ Length of the supply line (primary): 2.000 mm

Socket element. Retractable. With 2 Schuko sockets for hanging cabinets or worktops.

- material plastic, black
- profile aluminium
- covers stainless steel coloured, punched and brushed
- 2000 mm mains connection line, Schuko plug separately enclosed
- drill  $\varnothing$  ca. 80 mm
- for panel thickness from 16 mm to 60 mm, mounted by screw ring
- cable outlet below



[more infos...](#)

### Technical data

Article type	Socket element	Housing colour	stainless-steel coloured
Drilling diameter	80 mm	Material profile	aluminium
Cable outlet	cable outlet below	Mains plug loosely enclosed	Yes
Mounting/Fixing	installation in the worktop for hanging cabinets	Colour socket	black
Certification	CE	Installation diameter	86 mm
Surface/coating	brushed	Type of socket element	Retractable socket element
Length of the supply line (primary)	2.000 mm	Number of sockets (total)	2
Installation depth	135 mm	Opening mechanism	Push & Pull
Version sockets	2 x earthed plug socket	Worktop thickness	16–60 mm

### Accessories

7053053	Hole saw, $\varnothing$ 80 mm, for Elevator, VersaLift, Circle 80
---------	---

## Recommendations

7053053 Hole saw, Ø 80 mm, for Elevator, VersaLift, Circle 80