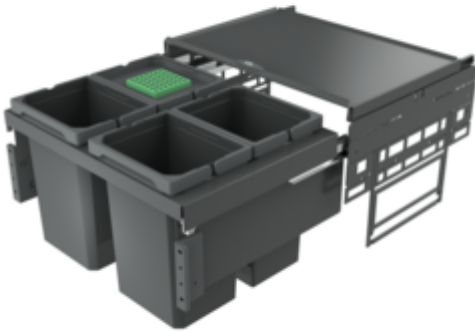


Cox[®] Base 360 S/600-4

Product number: 8013317

Configuration: with bio lid, anthracite, H 360 mm



Configuration options

8012316 | without bio lid, light grey, H 360 mm

8012317 | with bio lid, light grey, H 360 mm

8013316 | without bio lid, anthracite, H 360 mm

8013317 | with bio lid, anthracite, H 360 mm

✓ Front pull-out system

✓ full pull-out

✓ 40 l

With pull-out complete lid.

— guide rail depth 470 mm

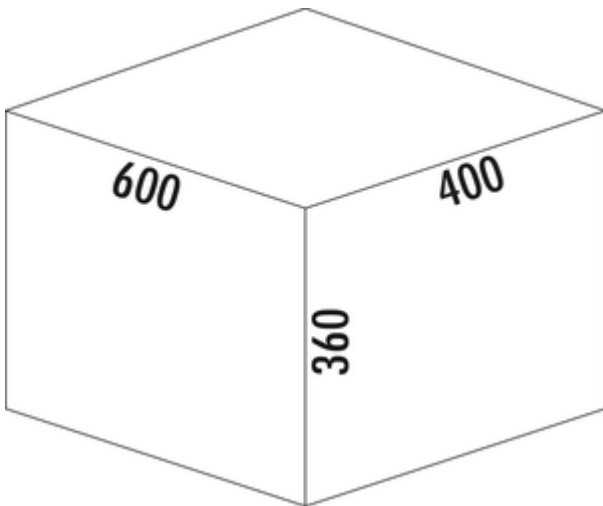
— waste capacity 40 (4 x 10) l

— technology: full pull-out

— fitting: cabinet wall and front panel

— for 16/19 mm side walls

— **with soft retraction and damping**



[more infos...](#)

Technical data

Article type	Waste collection system	Volume/content container 1	10 l
Height	360 mm	Volume/content container 2	10 l
Width	600 mm	Volume/content container 3	10 l
Mounting/Fixing	cabinet wall front panel	Volume/content container 4	10 l
Installation_height_list	360 mm	Soft closing	Yes
Cabinet width	600 mm	Colour container lid	anthracite/green
Shape	angular	Design	Front pull-out system
Installation depth	400 mm	Volume/Content container	10/10/10/10
Material container	plastic	Organic lid	Yes
Cover	Yes	Retractable total cover	Yes
Lid type(s)	Complete lid	Guide rail depth	470 mm
Number of containers	4	Biode lid bucket sizes	10 l
Opening technology	full pull-out	Locking mechanism	With damper
Total volume	40 l		

Spare Parts

8012320	Cox® system container, Single bucket, light grey, 10 liters
8010146	Complete lid, Accessory, silver
8013320	Cox® system container, Single bucket, anthracite, 10 liters
8013146	Complete lid, Accessory, anthracite

Recommendations

8012309	Cox® Base single bucket, Single bucket, light grey
8013309	Cox® Base single bucket, Single bucket, anthracite

Dimensional sketch (PDF)

The technical drawing shows a three-compartment trash bin with a lid. Dimensions are provided: a height of 562 mm and a width of 464 mm. A detailed view of the lid shows a width of 369 mm. The bin is shown in an exploded view with 14 numbered callouts corresponding to the parts list table.

Pos.	Abbildung	Menge	Bezeichnung	Artikel-Nr.	Material	RAL
1		1	Reifen anthrazit 600_400_2st	801 3146	DCOF	7012
2		2	Multiplast anthrazit	801 3307	ABS	7012
3		1	Gesamtdose anthrazit 600	801 3146	DCOF/OD12	7012
4		1	Schraube Nova pro 450 L	801 0026	Stahl verzinkt	
5		1	Schraube Nova pro 450 R	801 0026	Stahl verzinkt	
6		1	Frontpanel L	801 0150	Stahl verzinkt	7012
7		1	Frontpanel R	801 3161	PA 6	
8		1	Abdeckung R anthrazit	801 0150	Stahl verzinkt	7012
9		1	Abdeckung R anthrazit	801 3161	PA 6	
10		4	Ersatzreife anthrazit 10 L	801 3320	PP + PA6 GF 30%	7012
11		4	Müllreife		Stahl verzinkt	
12		4	Arbeitsgeschraube	801 0155	Stahl verzinkt	
13		4	Bottomplatt anthr. für 4, 6, 7, 10, 12, 5 L	801 3312	Zink-Durchzugs PP	
14		4	Bottomplatt anthr. für 4, 6, 7, 10, 12, 5 L	801 3312	PP	7012

Customer drawing
 Kundenzeichnung
 Naber
 11.12.18
 CAD

Technical drawing
 Technische Zeichnung
 Naber
 11.12.18
 CAD

Product description
 Produktbeschreibung
 Cox Base 360 S_600-4 Bio

Article number
 Artikelnummer
 8013317