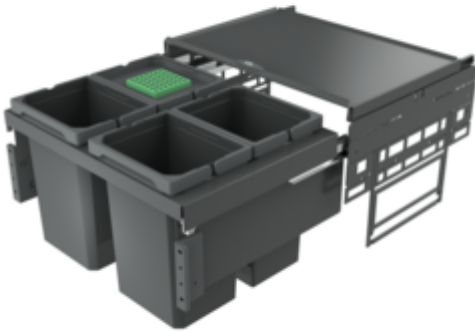


Cox[®] Base 360 S/600-4

Product number: 8013317

Configuration: with bio lid, anthracite, H 360 mm



Configuration options

8012316 | without bio lid, light grey, H 360 mm

8012317 | with bio lid, light grey, H 360 mm

8013316 | without bio lid, anthracite, H 360 mm

8013317 | with bio lid, anthracite, H 360 mm

✓ Front pull-out system

✓ full pull-out

✓ 40 l

With pull-out complete lid.

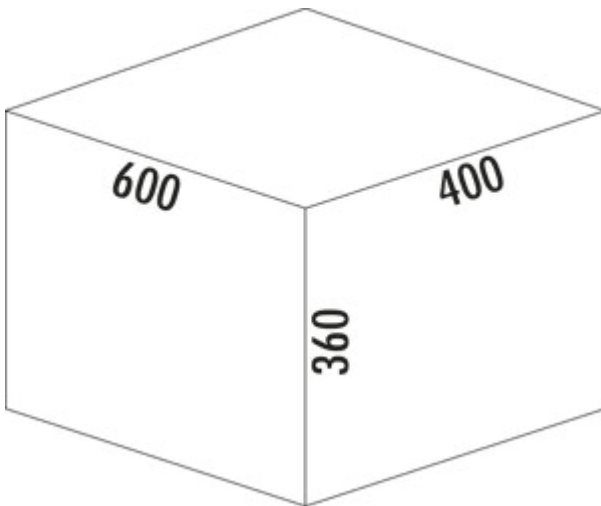
— guide rail depth 470 mm

— waste capacity 40 (4 x 10) liters

— technology: full pull-out

— fitting: cabinet wall and front panel

— with soft retraction and damping



[more infos...](#)

Technical data

Article type	Waste collection system	Volume/content container 2	10 l
Width	600 mm	Volume/content container 3	10 l
CE marking on the product	No	Volume/content container 4	10 l
Mounting/Fixing	cabinet wall front panel	Soft closing	Yes
Cabinet width	600 mm	Colour container lid	anthracite/green
Shape	angular	Design	Front pull-out system
Material container	plastic	Volume/Content container	10/10/10/10
Cover	Yes	Organic lid	Yes
Lid type(s)	Complete lid	Retractable total cover	Yes
Number of containers	4	Guide rail depth	470 mm
Opening technology	full pull-out	Biode lid bucket sizes	10 l
Total volume	40 l	Locking mechanism	With damper
Volume/content container 1	10 l		

Accessories

8011312	Bio-lid, Accessory, light grey, for 4/ 6/ 7/ 10/ 12.5 liters
8012368	Cox Cick-E® 600, Accessory, W 600 mm, dark grey/chrome matt
8011178	Bio-filter retrofitting set, Accessory, black
8013312	Bio-lid, Accessory, anthracite, for 4/ 6/ 7/ 10/ 12.5 liters

Spare Parts

8012320	Cox® system container, Single bucket, light grey, 10 liters
8010146	Complete lid, Accessory, silver
8013320	Cox® system container, Single bucket, anthracite, 10 liters
8013146	Complete lid, Accessory, anthracite

Recommendations

8012309	Cox® Base single bucket, Single bucket, light grey
8013309	Cox® Base single bucket, Single bucket, anthracite

Installation dimensions (PDF)

The technical drawing shows a side view of a trash bin with a width of 562 mm and a depth of 464 mm. A top-down view shows a width of 369 mm. A 3D exploded view of the bin is shown with numbered callouts from 1 to 14. Below the drawing is a table of parts and their specifications.

Pos.	Abbildung	Menge	Bezeichnung	Artikel-Nr.	Material	RAL
1		1	Reifen anthrazit 600_400_2A	8013146	DCOF	7012
2		2	Multiplast anthrazit	8013007	ABS	7012
3		1	Gesamtdose anthrazit 600	8013146	DCOF/OD12	7012
4		1	Schraube Grass Nova pro 450 L	8010026	Stahl verzinkt	
5		1	Schraube Grass Nova pro 450 R	8010026	Stahl verzinkt	
6		1	Frontpanel L	8010150	Stahl verzinkt	7012
7		1	Abdeckung L anthrazit	8013161	PA.6	
8		1	Frontpanel R	8010150	Stahl verzinkt	7012
9		1	Abdeckung R anthrazit	8013161	PA.6	
10		4	Ersatzreiner anthrazit 10 L	8013320	PP + PA6 GF 30%	7012
11		4	Müllgefäßstrabe		Stahl verzinkt	
12		4	Muller		Stahl verzinkt	
13		4	Anwendungsschraube	8010155	Zink-Dünnschraub	
14		4	Bodenfuß anthr. für 4, 6, 7, 10, 12, 15 L	8013312	PP	7012

Customer drawing: Kundenzeichnung

Material: Material

Dimensions: 562 mm (width), 464 mm (depth), 369 mm (top width)

Manufacturer: Naber

Product Name: Cox Base 360 S_600-4 Bio

Article Number: 8013317