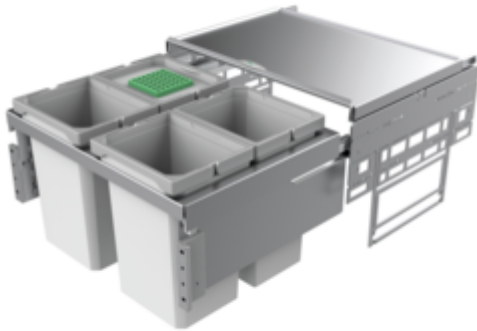


## Cox<sup>®</sup> Base 360 S/600-4

Product number: 8012317

Configuration: with bio lid, light grey, H 360 mm



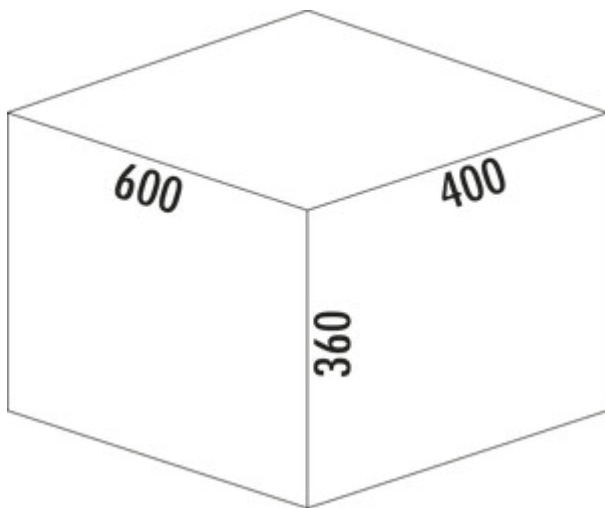
### Configuration options

- 8012316 | without bio lid, light grey, H 360 mm
- 8012317 | with bio lid, light grey, H 360 mm
- 8013316 | without bio lid, anthracite, H 360 mm
- 8013317 | with bio lid, anthracite, H 360 mm

- ✓ Front pull-out system
- ✓ full pull-out
- ✓ 40 l

With pull-out complete lid.

- guide rail depth 470 mm
- waste capacity 40 (4 x 10) liters
- technology: full pull-out
- fitting: cabinet wall and front panel
- with soft retraction and damping



[more infos...](#)

### Technical data

Article type	Waste collection system	Volume/content container 2	10 l
Width	600 mm	Volume/content container 3	10 l
CE marking on the product	No	Volume/content container 4	10 l
Mounting/Fixing	cabinet wall front panel	Soft closing	Yes
Cabinet width	600 mm	Colour guide	silver
Shape	angular	Colour container lid	light grey/green
Material container	plastic	Design	Front pull-out system
Colour total cover	silver	Volume/Content container	10/10/10/10
Cover	Yes	Organic lid	Yes
Lid type(s)	Complete lid	Retractable total cover	Yes
Number of containers	4	Guide rail depth	470 mm
Opening technology	full pull-out	Biode lid bucket sizes	10 l
Total volume	40 l	Locking mechanism	With damper
Volume/content container 1	10 l		

### Accessories

8011312	Bio-lid, Accessory, light grey, for 4/ 6/ 7/ 10/ 12.5 liters
8012368	Cox Cick-E® 600, Accessory, W 600 mm, dark grey/chrome matt
8011178	Bio-filter retrofitting set, Accessory, black
8013312	Bio-lid, Accessory, anthracite, for 4/ 6/ 7/ 10/ 12.5 liters

### Spare Parts

8012320	Cox® system container, Single bucket, light grey, 10 liters
8010146	Complete lid, Accessory, silver
8013320	Cox® system container, Single bucket, anthracite, 10 liters
8013146	Complete lid, Accessory, anthracite

### Recommendations

8012309	Cox® Base single bucket, Single bucket, light grey
8013309	Cox® Base single bucket, Single bucket, anthracite

Installation dimensions (PDF)

Pos.	Abbildung	Menge	Bezeichnung	Artikel-Nr.	Material	RAL
1		1	Palmen silber 600_400_2a	8010146	DCOI	9006
2		2	Montageplatte	8010007	ABS	7042
3		1	Gasstoßdämpfer silber 600	8010146	DCOI/OD12	9006
4		1	Schiene Glas Nova pro 450 L	8010026	Stahl verzinkt	
5		1	Schiene Glas Nova pro 450 R	8010026	Stahl verzinkt	
6		1	Frontpanel L	8010150	Stahl verzinkt	7042
7		1	Frontpanel R	8010150	Stahl verzinkt	7042
8		1	Abdeckung L	8010161	PA.6	
9		1	Abdeckung R	8010161	PA.6	
10		4	Ergonomischer Hebel 10 L	8012320	PP + PV6 GF 30%	7047 + 7042
11		4	Mülleiste	8010155	Stahl verzinkt	
12		4	Arbeitsgeschraube	8010155	Zink-Dünnschicht	
13		4	Bodenfuß 4, 6, 7, 10 und 12,5 L	8011312	PP	7047
14		1	Kundenzeichnung			

**Material**  
 Stahl verzinkt  
 PA.6  
 PP + PV6 GF 30%  
 Zink-Dünnschicht  
 PP

**Produktbeschreibung**  
 Cox Base 360 S\_600-4 Bio

**Artikelnummer**  
 8012317