

## Riva 2

Product number: 1014021  
Configuration: stainless steel

### Configuration options

1014021 | stainless steel  
1041051 | set (sink and Drive 1 faucet)

- ✓ Built-in sink
- ✓ Eccentric set
- ✓ 3½" basket strainer valve flush

Built-in sink. With draining surface, reversible. 3½" basket strainer valve flush, rotational excenter fitting.

- suitable for worktop thicknesses from 30 mm to 40 mm
- cut-out dimensions ca. 835 x 475 mm



[more infos...](#)

### Technical data

Article type	Sink	Depth main sink	410 mm
Width	860 mm	Maximum worktop material thickness	40 mm
Material	stainless steel	Material thickness worktop minimum	30 mm
Cabinet width	450 mm	Number of tap holes	1
Cut-out dimension	approx. 835 x 475 mm	Armature bench	Yes
Excenter fitting	Eccentric set	Number of holes	1
Valve type	3½" basket strainer valve flush	Arrangement sinks	Reversible
Overflow	with overflow	Number of sinks	1 main sink
Installation variant	Built-in sink	Number of overflow points	1
Main sink width	342 mm	Draining board	With ribbed draining surface
Height main sink	210 mm	Garnish actuation	Rotational excenter

### Accessories

1014024	Chopping board, solid beech, 445 x 225 mm
1014014	Drip tray, Accessory, stainless steel, 342 x 410 mm

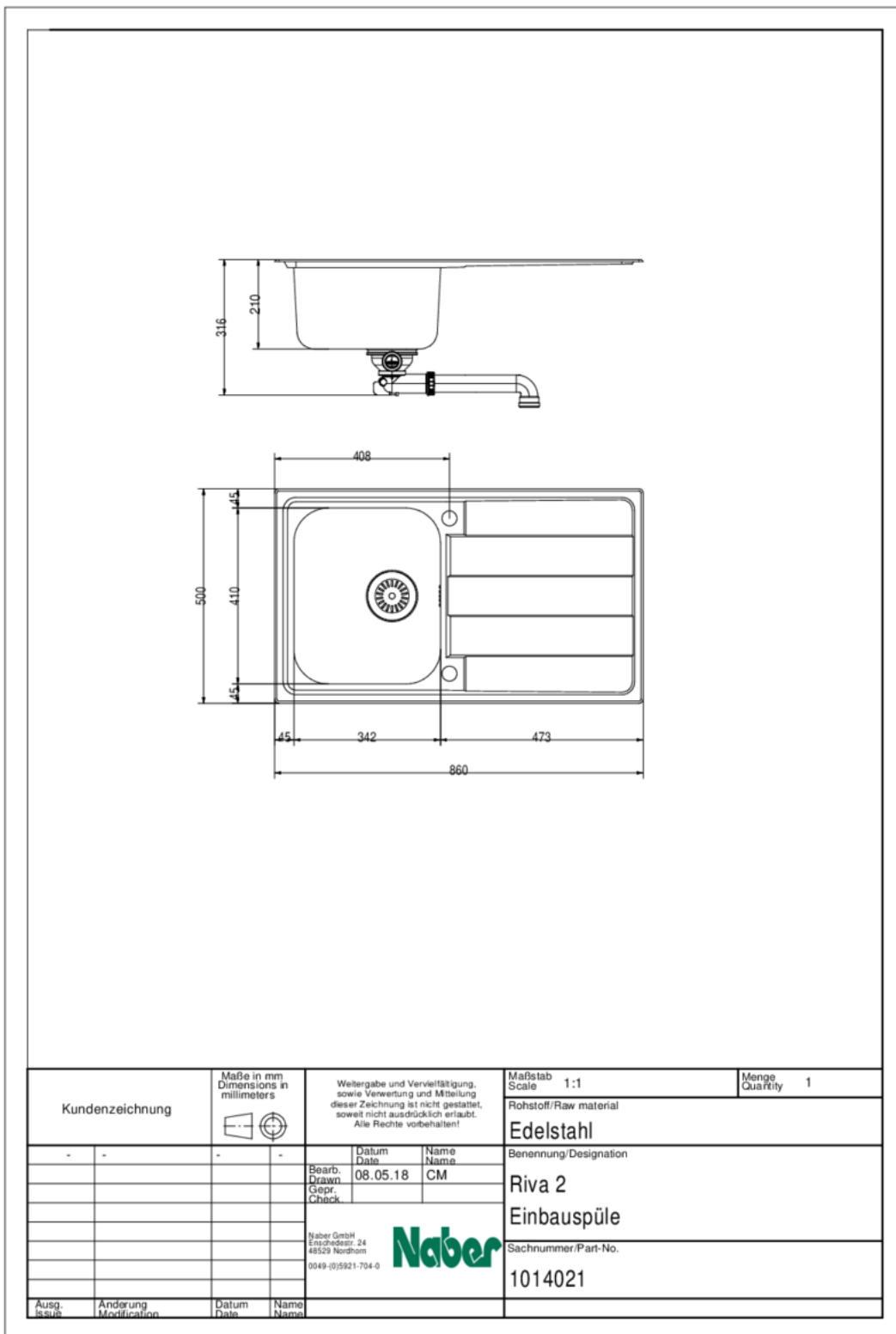
### Spare Parts

1014090	Rotational excenter fitting, Drain fittings, 3½" basket strainer valve flush, for Riva 1–3
---------	--

## Recommendations

5011060	Drive 1, Sink faucet, chrome, high pressure
1111141	Stainless steel system care, Cleaning agent,
1111142	Stainless steel cleaning agent Utral, Cleaning agent, 250 ml
1111143	Stainless steel care agent Edelglanz, Cleaning agent, 250 ml

Dimensional sketch (PDF)



Kundenzeichnung		Maße in mm Dimensions in millimeters	Weitergabe und Vervielfältigung, sowie Verwertung und Mitteilung dieser Zeichnung ist nicht gestattet, soweit nicht ausdrücklich erlaubt. Alle Rechte vorbehalten!		Maßstab Scale 1:1	Menge Quantity 1
-	-	-	-	Datum Date 08.05.18	Rohstoff/Raw material Edelstahl	
				Name Name CM	Benennung/Designation Riva 2	
				Naber GmbH Enschedestr. 24 48529 Nordhorn 0049-(0)5921-704-0	Einbauspüle	
					Sachnummer/Part-No. 1014021	
Ausg. Issus	Anderung Modification	Datum Date	Name Name			

Installation dimensions (PDF)

