

Riva 3

Product number: 1014022

Configuration: stainless steel

Configuration options

1014022 | stainless steel

1041052 | set (sink and Drive 1 faucet)

- ✓ Built-in sink
- ✓ Eccentric set
- ✓ 3½" basket strainer valve flush

Built-in sink. With draining surface, reversible. 3½" basket strainer valve flush, rotational excenter fitting.

— suitable for worktop thicknesses from 30 mm to 40 mm

— cut-out dimensions ca. 975 x 475 mm



[more infos...](#)

Technical data

Article type	Sink	Depth main sink	400 mm
Height	316 mm	Maximum worktop material thickness	40 mm
Width	1.000 mm	Material thickness worktop minimum	30 mm
Material	stainless steel	Number of tap holes	1
Cabinet width	600 mm	Armature bench	Yes
Cut-out dimension	approx. 975 x 475 mm	Number of holes	2
Excenter fitting	Eccentric set	Arrangement sinks	Reversible
Valve type	3½" basket strainer valve flush	Number of sinks	1 main sink
Overflow	with overflow	Number of overflow points	1
Installation variant	Built-in sink	Draining board	With ribbed draining surface
Main sink width	500 mm	Garnish actuation	Rotational excenter
Height main sink	210 mm		

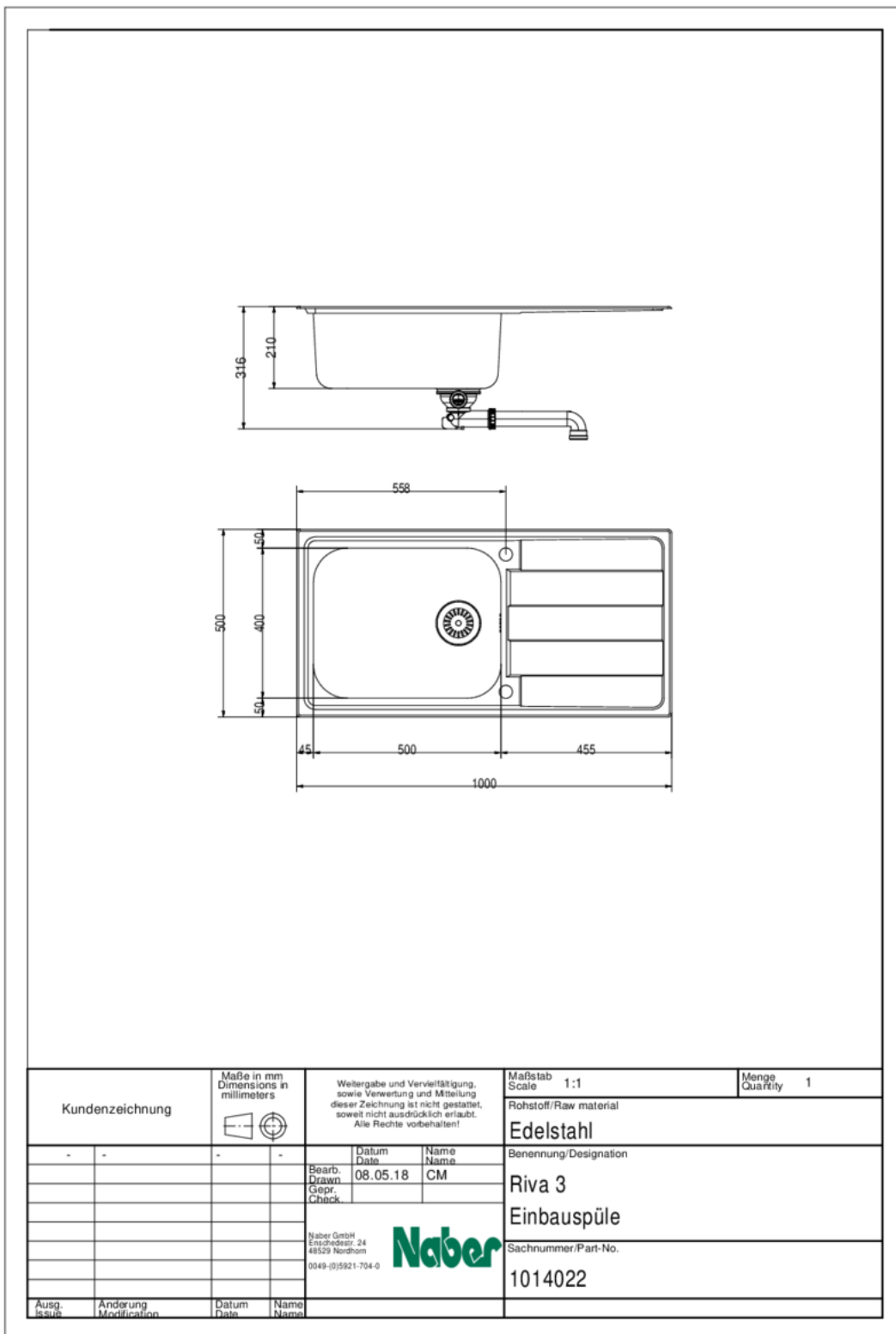
Spare Parts

1014090	Rotational excenter fitting, Drain fittings, 3½" basket strainer valve flush, for Riva 1–3
---------	--

Recommendations

5011060	Drive 1, Sink faucet, chrome, high pressure
1111141	Stainless steel system care, Cleaning agent,
1111142	Stainless steel cleaning agent Utral, Cleaning agent, 250 ml
1111143	Stainless steel care agent Edelglanz, Cleaning agent, 250 ml

Dimensional sketch (PDF)



Installation dimensions (PDF)

