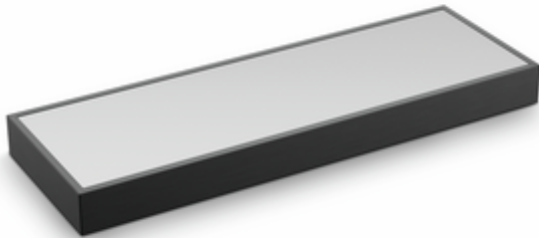


## Lista 50 colour change LED

Product number: 7062343

Configuration: L 600 mm, 4.3 W, black matt

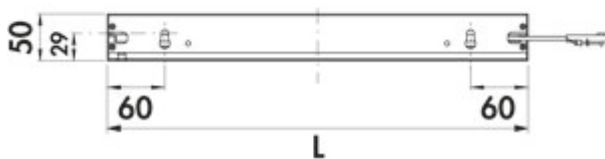
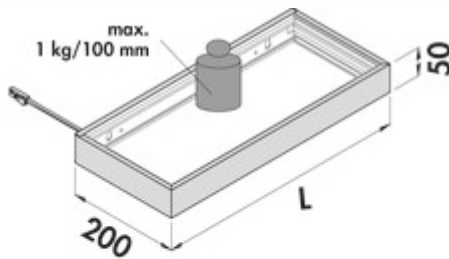


### Configuration options

- 7062340 | L 450 mm, 3.1 W, stainless steel coloured
- 7062341 | L 450 mm, 3.1 W, black matt
- 7062342 | L 600 mm, 4.3 W, stainless steel coloured
- 7062343 | L 600 mm, 4.3 W, black matt
- 7062344 | L 900 mm, 6.6 W, stainless steel coloured
- 7062345 | L 900 mm, 6.6 W, black matt
- 7062346 | L 1200 mm, 9 W, stainless steel coloured
- 7062347 | L 1200 mm, 9 W, black matt

- ✓ lit glass pane
- ✓ 2700 K warm white to 6500 K cold white
- ✓ angular

Lit glass shelf. Aluminium body, mat safety glass, with LED lighting, uniform illumination over the entire width upward and downward, free-hanging attachment up to a shelf depth of 200 mm, screws on the back, mounted invisibly. Converter not integrated in the lit glass shelf.



### Lit glass shelf

- 12 V, IP20
- continuous control of the light colour from 2700 K warm white to 6500 K cold white
- max. 64 lumen/watt at 6500 K cold white
- 2000 mm supply line with mini-plug-in system
- cable outlet rear left of lamp
- bearing capacity\* approx. 1 kg/100 mm
- incl. angle adjustment
- LIC/MEC LED system compatible

This product contains a light source of energy efficiency class G.

\*The load-bearing capacity depends on the wall condition. Suitable mounting material for the respective wall type is to be used.

More information about the LIC/MEC LED system



[more infos...](#)

## Technical data

Article type	lit glass pane	Housing colour	black matt
Width	600 mm	Colour temperature	2700 K warm white to 6500 K cold white
Energy efficiency class	G	Colour temperature adjustable	stepless
Transformer / converter required	Yes, must be ordered separately	LIC system compatible	Yes
Protection class	IP20	Plug-in system	with mini plug-in system
Protection class	III	Illuminant type	LED
Mounting/Fixing	Wall mounting screwable Screw fastening	Replaceable illuminant	No
Note	* The load-bearing capacity depends on the wall condition. Suitable mounting material for the respective wall type is to be used (not included in scope of delivery).	Light yield	max. 64 lumen/watt at 6500 K cold white
Material housing	aluminium	Connection	One-sided
Surface/coating	matt	Cover colour	transparent
Shape	angular	Homogeneous light field without visible LED points	Yes
Length of the supply line (primary)	2.000 mm	Design	lit glass pane
Carrying capacity	approx. 1.0 kg/100 mm	Illuminant power	4.3 watts
Illuminant included	Yes		

## Accessories

7061285	1-channel colour change remote control, white
7061286	FW function converter, module 2 (radio), 15 W, 4-way distributor
7061271	FW function converter, module 2 (radio), 30 W, 6-way distributor
7061273	FW function converter, module 2 (radio), 60 W, 6-way distributor
7061287	FW function converter, module 3 (Bluetooth + radio), 15 W, 4-way distributor
7061281	FW function converter, module 3 (Bluetooth + radio), 30 W, 6-way distributor
7061283	FW function converter, module 3 (Bluetooth + radio), 60 W, 6-way distributor
7061403	MEC Driver LED converter, 60/72 W, 12/24 V
7061426	MEC Driver LED 1-channel module radio/ZigBee, Accessory, 12 V
7061428	MEC Driver LED 4-channel module radio/ZigBee, Accessory, 12 V
7061431	MEC Driver LED remote control 1+4 channel ZigBee, white