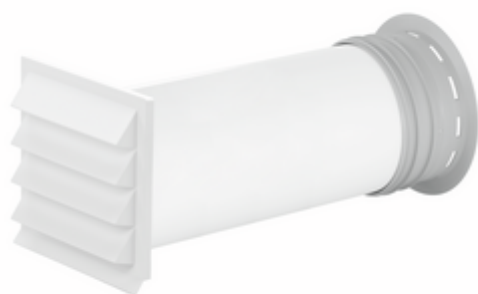


## PRIME flow P-K-Klima-R 150 wall conduct



Product number: 4051068

Configuration: white

### Configuration options

4051068 | white  
 4051070 | anthracite  
 4051074 | brick red  
 4051076 | light grey

✓ Wall sleeve

✓ plug-in system

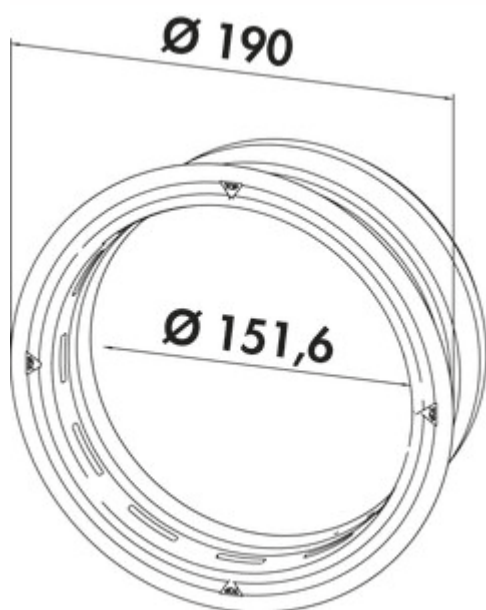
Wall conduct, with backflow trap — N-Klick system for secure connection with the universal connector

— direct connection of the flat adapter, round pipe or round pipe bends

— max. wall thickness 550 mm, can be shortened to 220 mm

— core hole drilling in nominal  $\varnothing$  162 or 164 mm

— wall sleeve for tool-free installation and sealing against leakage



[more infos...](#)

### Technical data

Article type	Wall sleeve	Outer diameter	190 mm
Brand	PRIME flow	Inner diameter	151,6 mm
Material	plastic	Connection diameter	150 mm
Properties	can be shortened	Suitable wall thickness	max. wall thickness 550 mm
Mounting/Fixing	plug-in system	Blind version	with backpressure shutter
Diameter	150 mm	System dimension	150
Suitable for	direct connection of the flat adapter, round pipe or round pipe bends	Ventilation system	COMPAIR PRIME flow <sup>®</sup>
Shortenability	can be shortened to 220 mm	Rohbauset	core hole drilling in nominal $\varnothing$ 162 mm
Field of use & application	Outside		

