

Riva 3

Product number: 1041052

Configuration: set (sink and Drive 1 faucet)

Configuration options

1014022 | stainless steel

1041052 | set (sink and Drive 1 faucet)

- ✓ Built-in sink
- ✓ Eccentric set
- ✓ 3½" basket strainer valve flush

Built-in sink. With draining surface, reversible. 3½" basket strainer valve flush, rotational excenter fitting.

— suitable for worktop thicknesses from 30 mm to 40 mm

— cut-out dimensions ca. 975 x 475 mm



[more infos...](#)

Technical data

Article type	Sink	Maximum worktop material thickness	40 mm
Width	1.000 mm	Material thickness worktop minimum	30 mm
Material	stainless steel	Number of tap holes	1
Cabinet width	600 mm	Armature bench	Yes
Cut-out dimension	approx. 975 x 475 mm	Number of holes	2
Excenter fitting	Eccentric set	Arrangement sinks	Reversible
Valve type	3½" basket strainer valve flush	Number of sinks	1 main sink
Installation variant	Built-in sink	Number of overflow points	1
Main sink width	500 mm	Draining board	With ribbed draining surface
Height main sink	210 mm	Garnish actuation	Rotational excenter
Depth main sink	400 mm		

Accessories

1014024	Chopping board, solid beech, 445 x 225 mm
---------	---

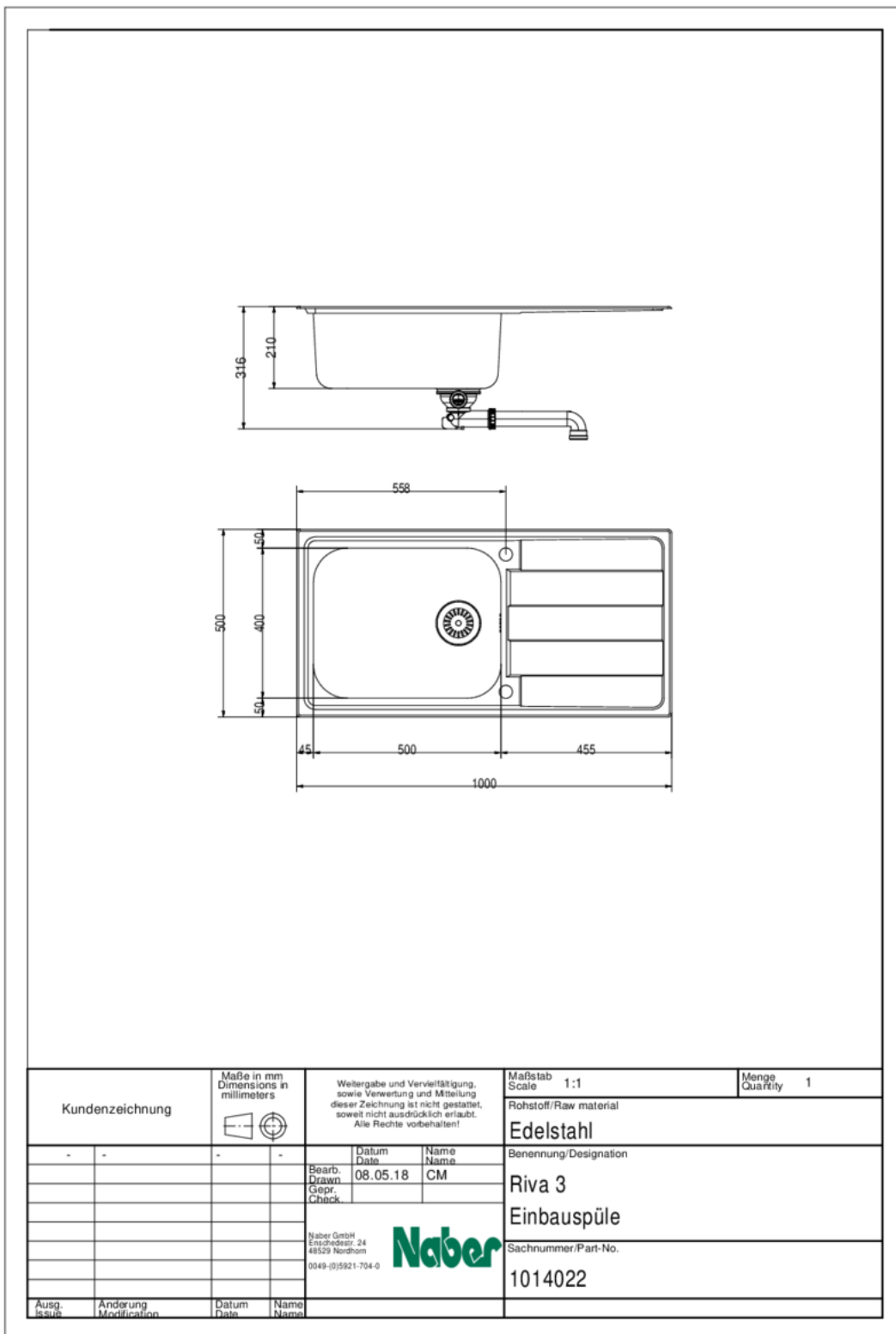
Spare Parts

1014090	Rotational excenter fitting, Drain fittings, 3½" basket strainer valve flush, for Riva 1–3
---------	--

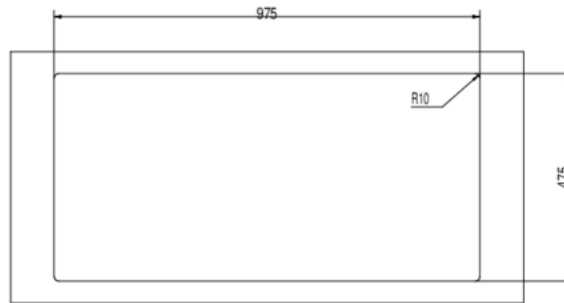
Recommendations

5011060	Drive 1, Sink faucet, chrome, high pressure
1111141	Stainless steel system care, Cleaning agent,
1111142	Stainless steel cleaning agent Utral, Cleaning agent, 250 ml
1111143	Stainless steel care agent Edelglanz, Cleaning agent, 250 ml

Dimensional sketch (PDF)



Installation dimensions (PDF)



Kundenzeichnung		Maße in mm Dimensions in millimeters	Weitergabe und Vervielfältigung, sowie Verwertung und Mitteilung dieser Zeichnung ist nicht gestattet, soweit nicht ausdrücklich erlaubt. Alle Rechte vorbehalten!		Maßstab Scale 1:1	Menge Quantity 1
-	-				Rohstoff/Raw material Einbaumaße	
			Datum Date 24.05.18	Name Name CM	Benennung/Designation Riva 3 Einbauspüle	
			Naber GmbH Enschedeestr. 24 48529 Nordhorn 0049-(0)5921-704-0		Sachnummer/Part-No. 1014022	
Ausg. Issus	Anderung Modification	Datum Date	Name Name			