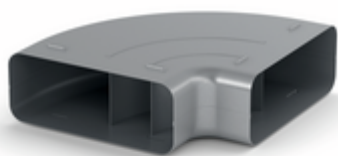


## STEEL flow SF-RBH 150 pipe bend horizontal 90°



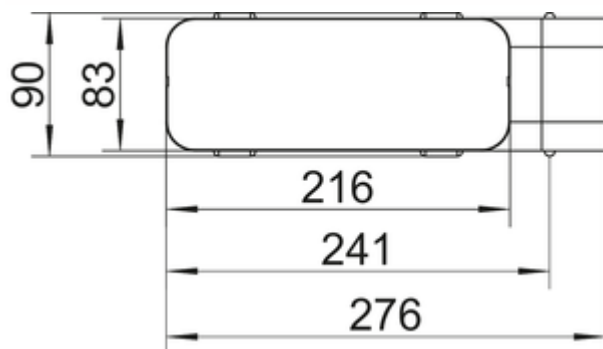
Product number: 4061014

Configuration: galvanized steel

### Configuration options

4061014 | galvanized steel

- ✓ Connecting element
  - ✓ plug-in system
- With guide vanes.  
— suitable for flat ducts SF-VRO flex and SF-VRO



[more infos...](#)

### Technical data

Article type	Connecting element	Suitable for	suitable for flat ducts SF-VRO flex and SF-VRO
Brand	STEEL flow	Surface/coating	galvanised
Height	90 mm	Shape	angular
Width	276 mm	Outer diameter	150 mm
Material	galvanized steel	Output drive	angular
Mounting/Fixing	plug-in system	Ventilation system	COMPAIR STEEL flow® 150

