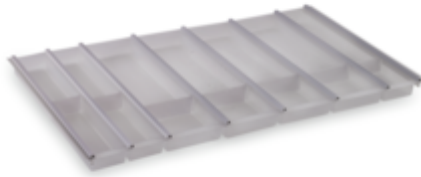


Cuisio 100



Product number: 8034222
 Configuration: graphite translucent

Configuration options
 8034097 | white translucent
 8034222 | graphite translucent

- ✓ Cutlery insert
- ✓ Adjustable
- ✓ plastic

Cutlery insert. For 1000 mm drawer width. White translucent with aluminium profile and graphite translucent with stainless-steel coloured profile.

Consisting of 1 x 600 mm insert, 2 x 150 mm inserts and 1 x 100 mm insert, divided into 1 x 200 mm bowl, 4 x 150 mm bowls and 1 x 100 mm bowl incl. subdivisions and profile.

- W min./max. 895/920 mm
- D min./max. 463/480 mm

[more infos...](#)

Technical data

Article type	Cutlery insert	Properties	Adjustable
Width	895 - 920 mm	Consisting of	1 x 600 mm insert, 2 x 150 mm inserts and 1 x 100 mm insert, divided into 1 x 200 mm bowl, 4 x 150 mm bowls and 1 x 100 mm bowl incl. subdivisions with stainless-steel coloured profile
Material	plastic	Drawer width	for 1000 mm drawer width

Accessories

8034059	Cuisio knife insert, Cutlery insert, for 100 mm bowl
8034060	Cuisio knife insert, Cutlery insert, for 150 mm bowl
8034114	Cuisio dividing strips/side end 2, Cutlery insert, dividing strips, for 100 mm bowl
8034115	Cuisio dividing strips/side end 2, Cutlery insert, dividing strips, for 150 mm bowl
8034116	Cuisio dividing strips/side end 2, Cutlery insert, dividing strips, for 200 mm bowl
8034117	Cuisio dividing strips/side end 2, Cutlery insert, side end
8034227	Cuisio dividing strips/side end 3, Cutlery insert, dividing strips, for 100 mm bowl
8034228	Cuisio dividing strips/side end 3, Cutlery insert, dividing strips, for 150 mm bowl
8034229	Cuisio dividing strips/side end 3, Cutlery insert, dividing strips, for 200 mm bowl
8034230	Cuisio dividing strips/side end 3, Cutlery insert, side end