

Riva 1

Product number: 1014020
Configuration: stainless steel

Configuration options

1014020 | stainless steel
1041050 | set (sink and Drive 1 faucet)

- ✓ Built-in sink
- ✓ Eccentric set
- ✓ 3½" basket strainer valve flush

Built-in sink. With draining surface, reversible. 3½" basket strainer valve flush, rotational excenter fitting.

- suitable for worktop thicknesses from 30 mm to 40 mm
- cut-out dimensions ca. 770 x 480 mm



[more infos...](#)

Technical data

Article type	Sink	Depth main sink	410 mm
Height	316 mm	Maximum worktop material thickness	40 mm
Width	790 mm	Material thickness worktop minimum	30 mm
Material	stainless steel	Number of tap holes	1
Cabinet width	450 mm	Armature bench	Yes
Cut-out dimension	approx. 770 x 480 mm	Number of holes	1
Excenter fitting	Eccentric set	Arrangement sinks	Reversible
Valve type	3½" basket strainer valve flush	Number of sinks	1 main sink
Overflow	with overflow	Number of overflow points	1
Installation variant	Built-in sink	Draining board	With ribbed draining surface
Main sink width	342 mm	Garnish actuation	Rotational excenter
Height main sink	210 mm		

Accessories

1014014 Drip tray, Accessory, stainless steel, 342 x 410 mm

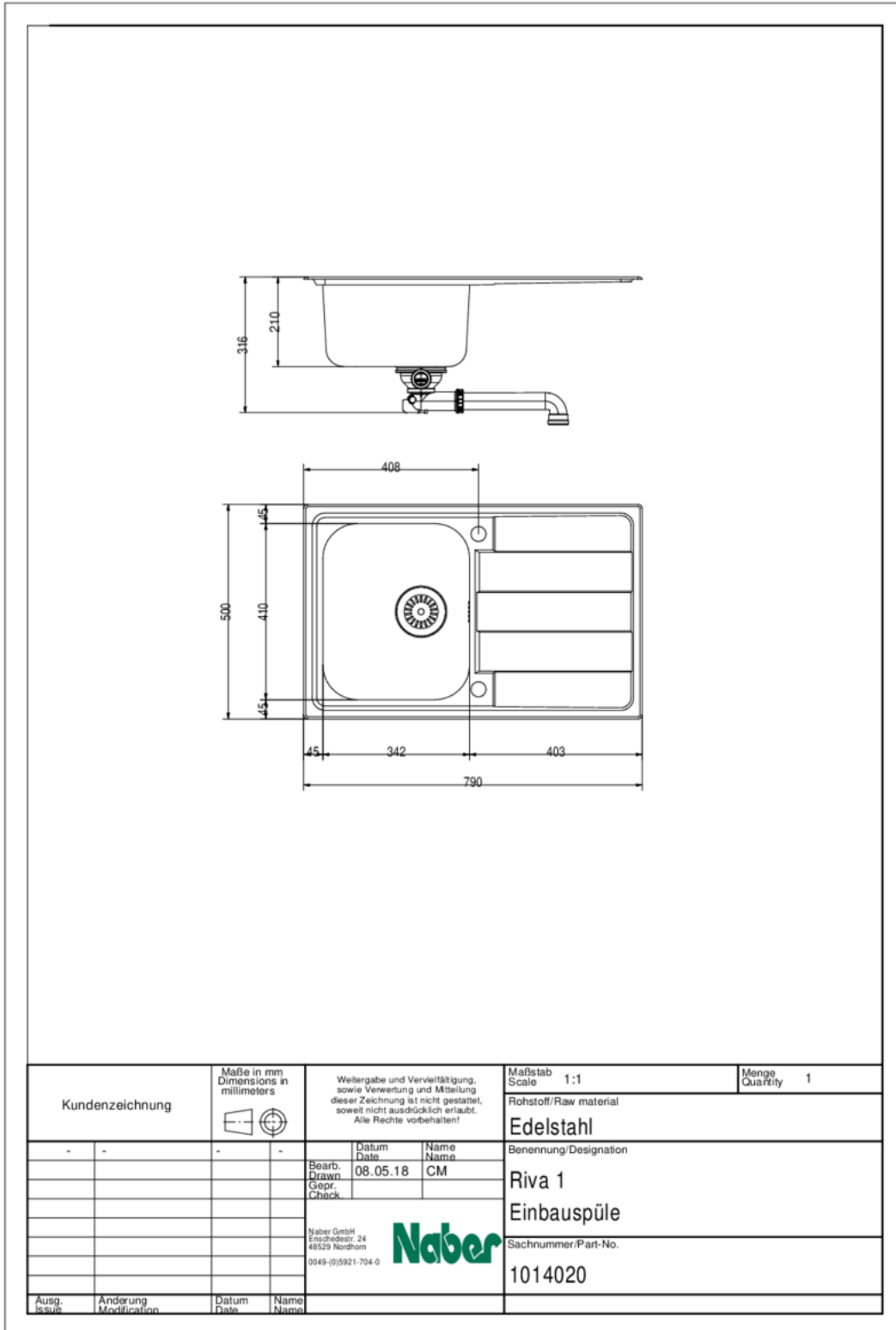
Spare Parts

1014090 Rotational excenter fitting, Drain fittings, 3½" basket strainer valve flush, for Riva 1–3

Recommendations

5011060	Drive 1, Sink faucet, chrome, high pressure
1111141	Stainless steel system care, Cleaning agent,
1111142	Stainless steel cleaning agent Utral, Cleaning agent, 250 ml
1111143	Stainless steel care agent Edelglanz, Cleaning agent, 250 ml

Dimensional sketch (PDF)



Installation dimensions (PDF)

