

Riva 1

Product number: 1014020
Configuration: stainless steel

Configuration options

1014020 | stainless steel
1041050 | set (sink and Drive 1 faucet)

- ✓ Built-in sink
- ✓ Eccentric set
- ✓ 3½" basket strainer valve flush

Built-in sink. With draining surface, reversible. 3½" basket strainer valve flush, rotational excenter fitting.

- suitable for worktop thicknesses from 30 mm to 40 mm
- cut-out dimensions ca. 770 x 480 mm



[more infos...](#)

Technical data

Article type	Sink	Depth main sink	410 mm
Width	790 mm	Maximum worktop material thickness	40 mm
Material	stainless steel	Material thickness worktop minimum	30 mm
Cabinet width	450 mm	Number of tap holes	1
Cut-out dimension	approx. 770 x 480 mm	Armature bench	Yes
Excenter fitting	Eccentric set	Number of holes	1
Valve type	3½" basket strainer valve flush	Arrangement sinks	Reversible
Overflow	with overflow	Number of sinks	1 main sink
Installation variant	Built-in sink	Number of overflow points	1
Main sink width	342 mm	Draining board	With ribbed draining surface
Height main sink	210 mm	Garnish actuation	Rotational excenter

Accessories

1014024	Chopping board, solid beech, 445 x 225 mm
1014014	Drip tray, Accessory, stainless steel, 342 x 410 mm

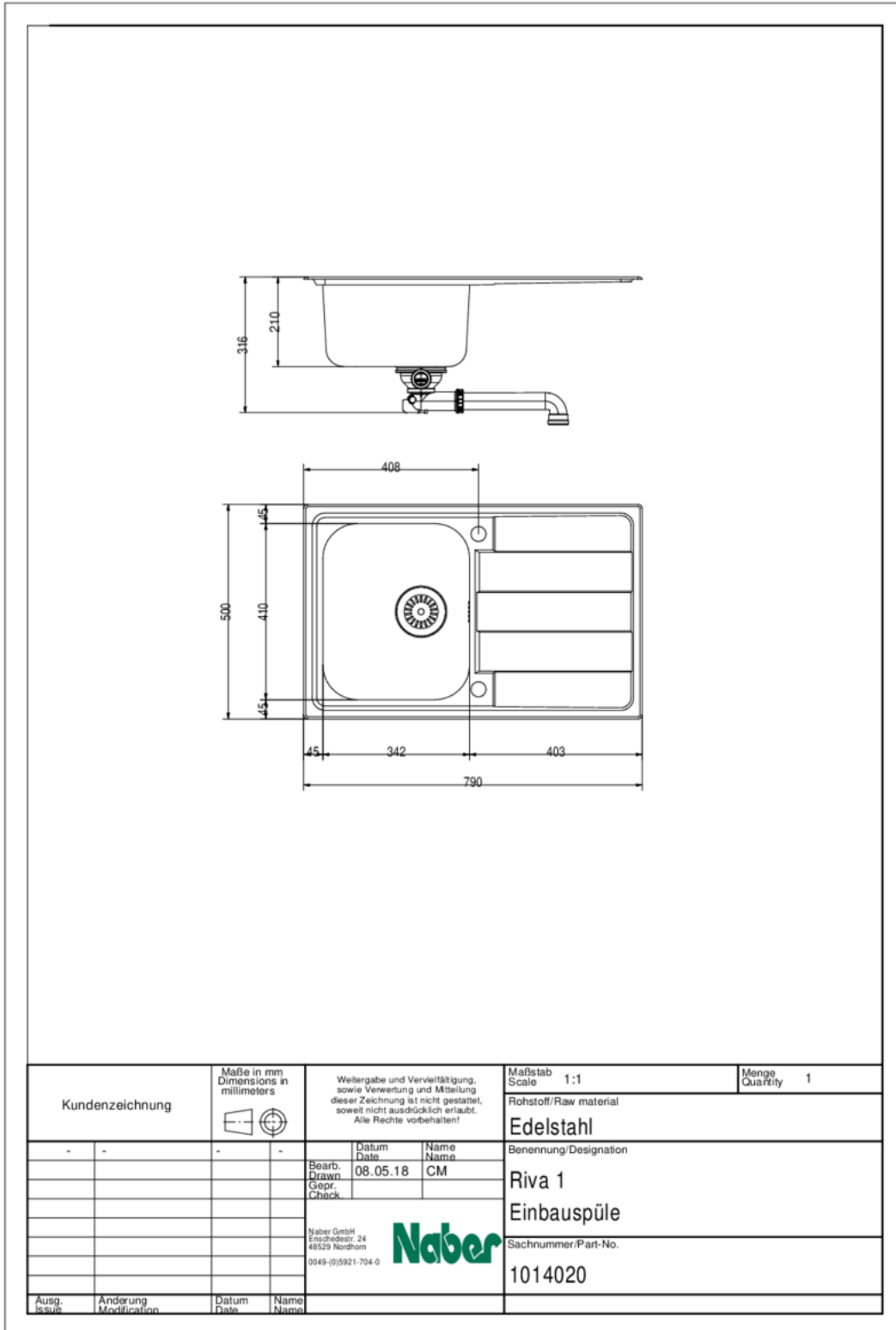
Spare Parts

1014090	Rotational excenter fitting, Drain fittings, 3½" basket strainer valve flush, for Riva 1–3
---------	--------------------------------------------------------------------------------------------

Recommendations

5011060	Drive 1, Sink faucet, chrome, high pressure
1111141	Stainless steel system care, Cleaning agent,
1111142	Stainless steel cleaning agent Utral, Cleaning agent, 250 ml
1111143	Stainless steel care agent Edelglanz, Cleaning agent, 250 ml

Dimensional sketch (PDF)



Installation dimensions (PDF)

