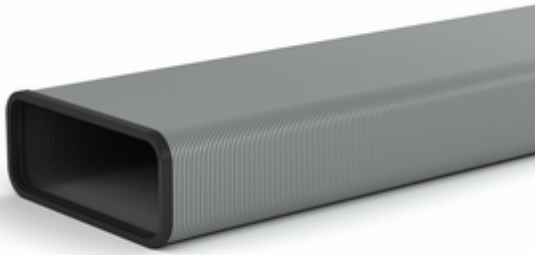


STEEL flow SF-VRO flex 150 flat duct



Product number: 4061001
Configuration: L 500 mm, aluminium

Configuration options

4061001 | L 500 mm, aluminium
4061002 | L 1000 mm, aluminium

✓ Ventilation pipe

✓ plug-in system

Ventilation pipe, flexible.

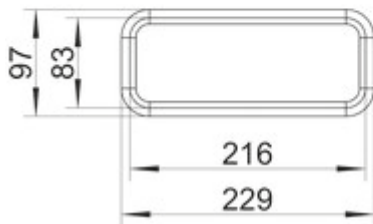
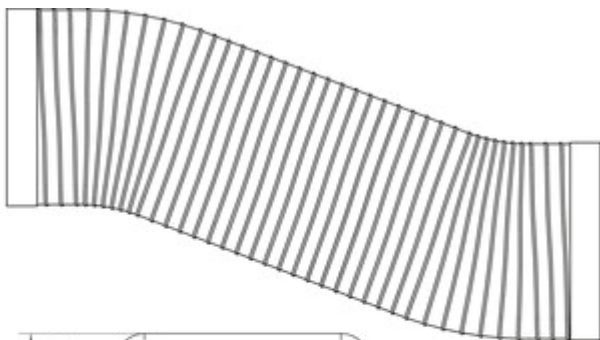
— can be shortened

— connection size metal duct 216 x 83 mm (with seal)

— 2 SF profile linings pre-assembled

— can be used for, e.g. bends (<90°) or parallel offsetting

— after removing the profile seal, connection to a flat plastic duct is possible



[more infos...](#)

Technical data

| | | | |
|-----------------|------------------------------|----------------------|---|
| Article type | Ventilation pipe | Note | 2 SF profile linings pre-assembled can be used for, e.g. bends (<90°) or parallel offsetting after removing the profile seal, connection to a flat plastic duct is possible |
| Brand | STEEL flow | Shape | angular |
| Width | 500 mm | Outer diameter | 150 mm |
| Material | aluminium | Connection dimension | connection size metal duct 216 x 83 mm (with seal) |
| Properties | can be shortened flexible | Output drive | angular |
| Mounting/Fixing | plug-in system | Ventilation system | COMPAIR STEEL flow® 150 |

