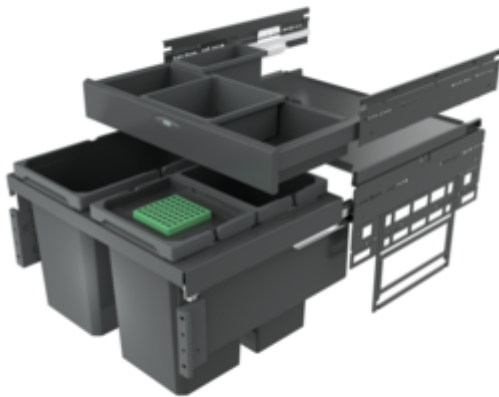


## Cox® Base 360 S/600-3 with Base-Board

Product number: 8013375

Configuration: with bio lid, anthracite, H 460 mm



### Configuration options

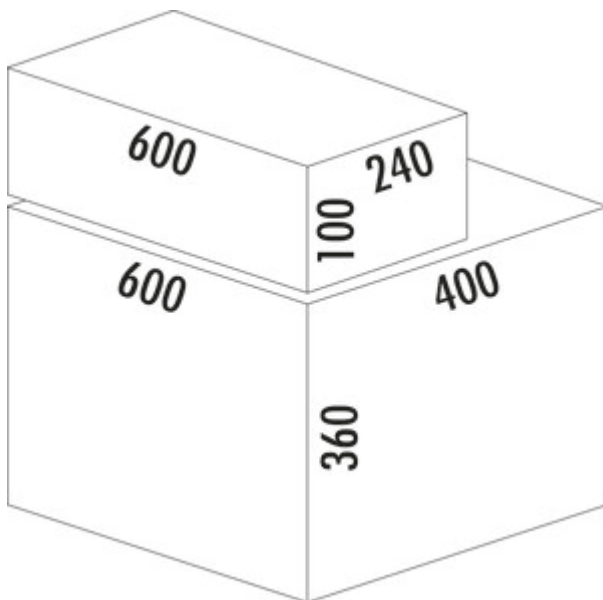
8012374 | without bio lid, light grey, H 460 mm

8012375 | with bio lid, light grey, H 460 mm

8013374 | without bio lid, anthracite, H 460 mm

8013375 | with bio lid, anthracite, H 460 mm

- ✓ Front pull-out system
- ✓ full pull-out
- ✓ 42 l
  - guide rail depth 470 mm
  - waste capacity 42 (2 x 10/1 x 22) liters
  - technology: full pull-out
  - fitting: cabinet wall and front panel
  - with soft retraction and damping
  - 1 x 2.7 l and 1 x 1.2 l storage boxes and 4 brackets included



[more infos...](#)

### Technical data

Article type	Waste collection system	Volume/content container 2	10 l
Height	460 mm	Volume/content container 3	10 l
Width	600 mm	Soft closing	Yes
CE marking on the product	No	Colour container lid	anthracite/green
Mounting/Fixing	cabinet wall front panel	Design	Front pull-out system
Cabinet width	600 mm	Volume/Content container	22/10/10
Shape	angular	Organic lid	Yes
Material container	plastic	Number of containers in additional drawer	2
Number of containers	3	Guide rail depth	470 mm
Opening technology	full pull-out	Volume/capacity drawer container 1	2.7 l
Total volume	42 l	Volume/capacity drawer container 2	1,2 l
Volume/content container 1	22 l	Locking mechanism	With damper

**Accessories**

8011312	Bio-lid, Accessory, light grey, for 4/ 6/ 7/ 10/ 12.5 liters
8013312	Bio-lid, Accessory, anthracite, for 4/ 6/ 7/ 10/ 12.5 liters
8012368	Cox Cick-E® 600, Accessory, W 600 mm, dark grey/chrome matt
8012367	Cox Cick®, Accessory, dark grey/chrome matt
8012363	Storage box, Utensil box, dark grey, 1.2 liters
8013363	Storage box, Utensil box, anthracite, 1.2 liters
8012362	Storage box, Utensil box, dark grey, 2.7 liters
8013362	Storage box, Utensil box, anthracite, 2.7 liters
8012364	Bracket for storage box, Accessory, silver

**Spare Parts**

8010146	Complete lid, Accessory, silver
8012363	Storage box, Utensil box, dark grey, 1.2 liters
8012320	Cox® system container, Single bucket, light grey, 10 liters
8012362	Storage box, Utensil box, dark grey, 2.7 liters
8012364	Bracket for storage box, Accessory, silver
8012322	Cox® system container, Single bucket, light grey, 22 liters
8013146	Complete lid, Accessory, anthracite
8013362	Storage box, Utensil box, anthracite, 2.7 liters

Installation dimensions (PDF)

Pos.	Abbildung	Anz.	Bezeichnung	Artikel-Nr.	Material	RAL
1		1	Deckplatte	801 3146	DD01/DD12	7012
2		2	Ersatzteile anfrucht 600	801 3320	PP + PA6 GF 30%	7012
3		2	Schiene Nova pro 450 L	801 0026	Stahl verzinkt	7012
4		2	Schiene Grass Nova pro 450 R	801 0028	Stahl verzinkt	7012
5		1	Frontblech L	801 0150	Stahl verzinkt	7012
6		1	Frontblech R	801 3161	Stahl verzinkt	7012
7		1	Abdeckung R anfrucht	801 0150	Stahl verzinkt	7012
8		1	Abdeckung R anfrucht	801 3161	PA 6	7012
9		4	Mutter	801 0155	Stahl verzinkt	7012
10		4	Anreicherungsschraube	801 3146	Zink-Durchzugs	7012
11		1	Rahmen anfrucht 600_400_2A	801 3146	DC01	7012
12		1	Aufwählungstypbox 1,2 L	801 3383	PP	7012
13		4	Halterung für Aufwählungstypbox	801 2304	DN51 0-2M/C	ZnK
14		2	Montageplatte Cox Base Board anfrucht	801 3320	ABS	7012
15		1	Aufwählungstypbox 2,7 L	801 3382	PP	7012
16		1	Schublade 600 anfrucht	801 3322	DC01 A	7012
17		1	Ersatzteile anfrucht 22 L	801 3322	PP + PA6 GF 30%	7012
18		1	Bodoclock anfrucht 22 L	801 3312	PP	7012
19		2	Montageplatte anfrucht	801 3307	ABS	7012
20		2	Kundenzeichnung			

Material	Material	Material
ABS	DC01	DC01 A
PA 6	PP	PP + PA6 GF 30%
Stahl verzinkt	Stahl verzinkt	Stahl verzinkt
ZnK	Zink-Durchzugs	ZnK

Kundenzeichnung 19.03.18 CAD	Naber 8013375
------------------------------------	------------------