



Evoline® Qi Wireless Charger

Product number: 8031175

Configuration: black matt

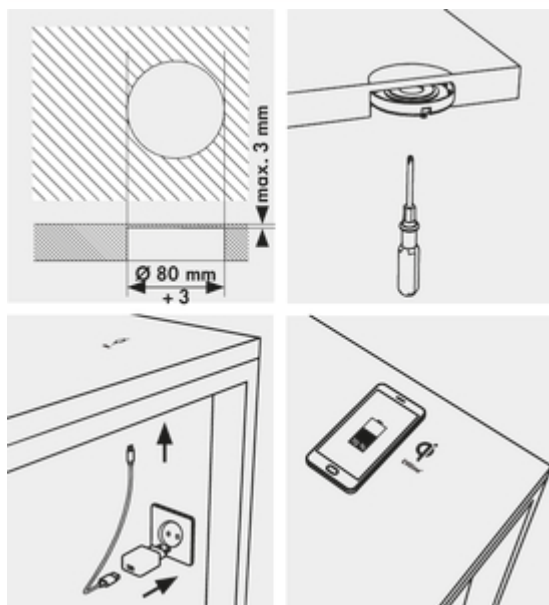
Configuration options

8031175 | black matt

- ✓ Socket element
- ✓ Wireless Charger
- ✓ Length of the supply line (primary): 1.500 mm

Charging coil. Installation unit Ø 80 mm with a Qi wireless coil. Mains connection cable with EU adapter. For integration in the table top or for installation in table openings Ø 80 mm.

- the device is certified in accordance with WPC standard 1.2.2 Qi
- operating voltage 5 V
- charging power max. 10 W
- external power supply wall plug transformer 230 V
- 1500 mm supply line
- with invisible installation plate thickness max. 3 mm
- installation without cover



[more infos...](#)

Technical data

Article type	Charging station	Version sockets	Wireless Charger
Mains voltage	230 VAC / 5 V	Mains plug loosely enclosed	Yes
Mounting/Fixing	installation	Colour bezel	black matt
Certification	CE WPC 1.2.2 Qi	Installation diameter	80 mm
Diameter	88 mm	Qi charging surface	Yes
Length of the supply line (primary)	1.500 mm	Type of socket element	Socket element
Installation depth	28 mm	Worktop thickness	with invisible installation plate thickness max. 3 mm

Accessories

7053053	Hole saw, Ø 80 mm, for Elevator, VersaLift, Circle 80
---------	---