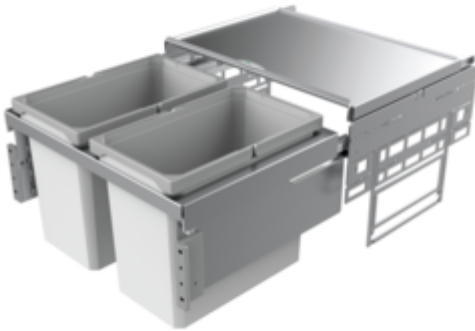


Cox[®] Base 360 S/600-2

Product number: 8012304

Configuration: light grey, H 360 mm



Configuration options

8012304 | light grey, H 360 mm

8013304 | anthracite, H 360 mm

✓ Front pull-out system

✓ full pull-out

✓ 44 l

With pull-out complete lid.

— guide rail depth 470 mm

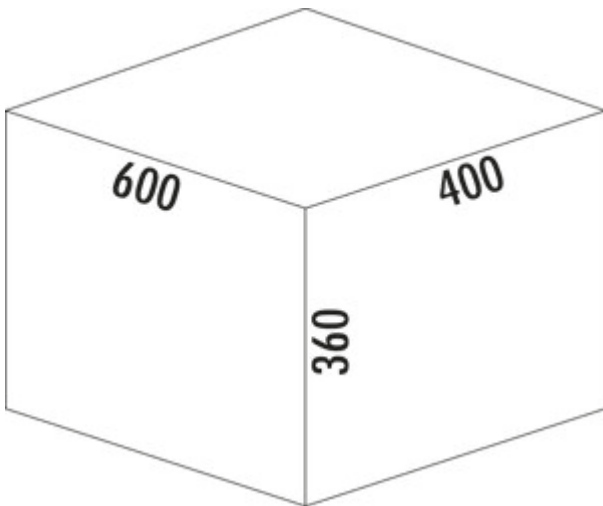
— waste capacity 44 (2 x 22) liters

— technology: full pull-out

— fitting: cabinet wall and front panel

— with soft retraction and damping

— suitable for Cox Work[®] utensils box



[more infos...](#)

Technical data

Article type	Waste collection system	Total volume	44 l
Width	600 mm	Volume/content container 1	22 l
CE marking on the product	No	Volume/content container 2	22 l
Mounting/Fixing	cabinet wall front panel	Soft closing	Yes
Cabinet width	600 mm	Colour guide	silver
Shape	angular	Design	Front pull-out system
Material container	plastic	Volume/Content container	22/22
Cover	Yes	Retractable total cover	Yes
Lid type(s)	Complete lid	Guide rail depth	470 mm
Number of containers	2	Locking mechanism	With damper
Opening technology	full pull-out		

Accessories

8012368	Cox Cick-E [®] 600, Accessory, W 600 mm, dark grey/chrome matt
8012367	Cox Cick [®] , Accessory, dark grey/chrome matt

Spare Parts

8012322	Cox® system container, Single bucket, light grey, 22 liters
8010146	Complete lid, Accessory, silver
8013146	Complete lid, Accessory, anthracite
8013322	Cox® system container, Single bucket, anthracite, 22 liters

Recommendations

8012309	Cox® Base single bucket, Single bucket, light grey
8013309	Cox® Base single bucket, Single bucket, anthracite

Installation dimensions (PDF)

Pos.	Abbildung	Anz.	Benennung	Artikel-Nr.	Material	RM
1		1	Rahmen silber 600, 400, 2a	801 0148	DC01	9006
2		1	Gasstrichschüssel silber 600	801 0146	DC01/DC12	9006
3		2	Ersatzschrauber mitgew. 22 L	801 2322	pp + PA6 GF 30%	7047 + 7042
4		1	Frontschüssel L	801 0150	Stahl verzinkt	7042
5		1	Abdeckung L	801 0161	PA 6	7042
6		1	Frontschüssel R	801 0150	Stahl verzinkt	7042
7		1	Abdeckung R	801 0161	PA 6	7042
8		4	Anreissungsschraube	801 0155	Zink-Dünnschraub	
9		4	Möbelfüßschraube	801 0155	Stahl verzinkt	
10		4	Muller	801 0026	Stahl verzinkt	
11		1	Schiene Grass Nova pro 450 L	801 0026	Stahl verzinkt	
12		1	Schiene Grass Nova pro 450 R	801 0026	Stahl verzinkt	
13		2	Montageplatte	801 0007	ABS	7042

Kundenzzeichnung

MADE IN CHINA

Hersteller: Naber GmbH, Enschedestr. 24, 49129 Nordhorn, Deutschland

Produktbeschreibung: **Cox Base 360 S_600-2**

Produktcode: **8012304**