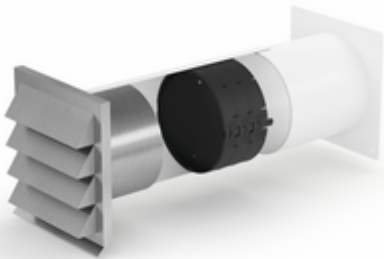


E-Jal 150 wall conduct incl. THERMOBOX



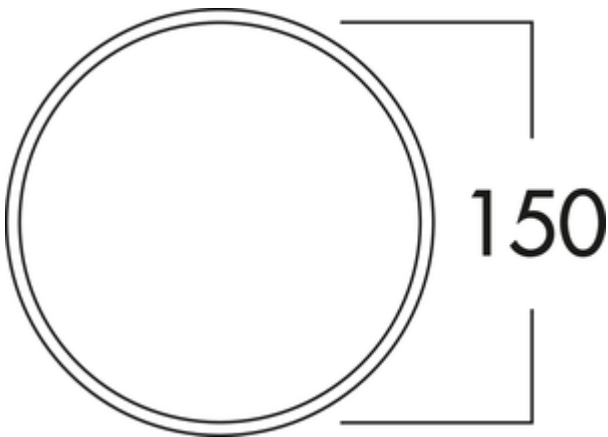
Product number: 4043065
 Configuration: white, stainless steel

Configuration options
 4043065 | white, stainless steel

✓ Wall sleeve

Wall conduct with telescopic pipe, incl. built-in heat retention system THERMOBOX and **stainless steel external E-Jal**.

- hose/pipe connection Ø 150 mm
- connection depth 24 mm
- installation depth 350–500 mm, can be shortened to 255 mm
- wall penetration Ø ca. 155 mm
- Blower-Door certified (required opening pressure >65 Pa)



[more infos...](#)

Technical data

Article type	Wall sleeve	Diameter wall opening	155 mm
Material	stainless steel	Installation depth	350–500 mm
Properties	can be shortened	Wall box version	wall conduct with telescopic pipe, incl. built-in heat retention system THERMOBOX and stainless steel external E-Jal
Certification	stainless	Pipe socket dimension	hose/pipe connector Ø 150 mm
Shape	angular	System dimension	150
Outer diameter	150 mm	Output drive	round
Support depth	24 mm	Ventilation system	COMPAIR flow 150

