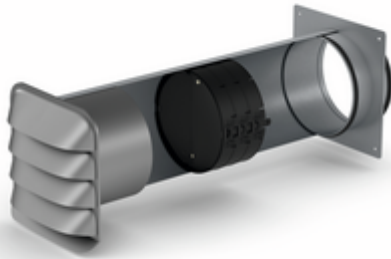


STEEL flow SF-E-Jal Col® 150 wall conduct incl. THERMOBOX

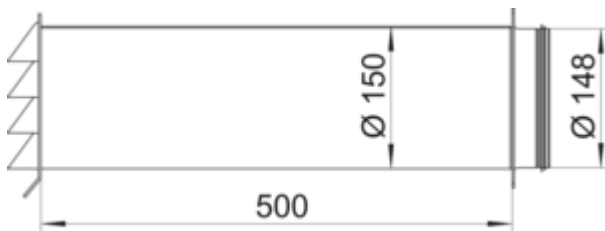


Product number: 4061031

Configuration: galvanized steel, stainless steel

Configuration options

4061031 | galvanized steel, stainless steel



- ✓ Wall sleeve
- ✓ installation in the wall
- ✓ plug-in system

Wall conduct, incl. built-in heat retention system THERMOBOX and **stainless steel external blind E-Jal Col®**. Guide vanes on the slats of the blind provide for optimised flow guidance.

- can be shortened
- installation depth 500 mm, can be shortened to 220 mm
- wall penetration Ø ca. 155 mm
- suitable for round pipes SR-R flex and SR-R
- connection to a plastic round pipe possible

[more infos...](#)

Technical data

Article type	Wall sleeve	Outer diameter	150 mm
Brand	STEEL flow	Diameter wall opening	155 mm
Material	galvanized steel	Connection diameter	148 mm
Properties	can be shortened	Installation depth	500 mm
Mounting/Fixing	installation in the wall plug-in system	Wall box version	wall conduct, incl. built-in heat retention system THERMOBOX and stainless steel external blind E-Jal Col® guide vanes on the slats of the blind ensure optimised flow guidance
Note	connection to a plastic round pipe possible	System dimension	150
Suitable for	suitable for round pipes SR-R flex and SR-R	Output drive	round
Surface/coating	galvanised	Ventilation system	COMPAIR STEEL flow® 150
Shortenability	can be shortened to 220 mm		

Installation dimensions (PDF)

