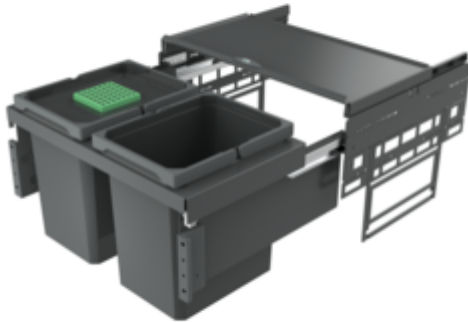


## Cox<sup>®</sup> Base 360 K/600-2

Product number: 8013403

Configuration: with bio lid, anthracite, H 360 mm



### Configuration options

8012402 | without bio lid, light grey, H 360 mm

8012403 | with bio lid, light grey, H 360 mm

8013402 | without bio lid, anthracite, H 360 mm

8013403 | with bio lid, anthracite, H 360 mm

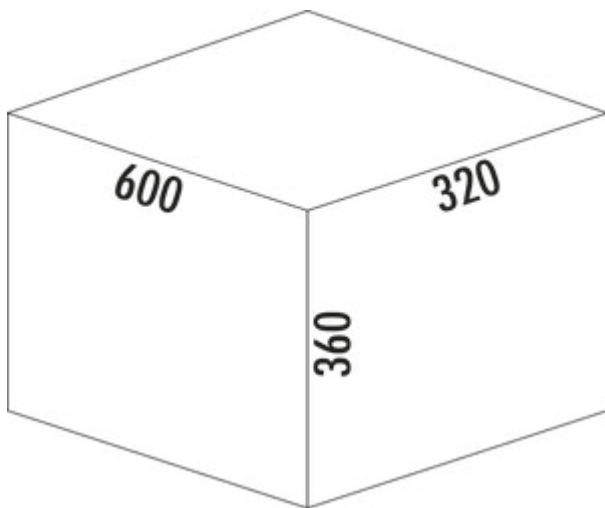
✓ Front pull-out system

✓ full pull-out

✓ 31 l

With pull-out complete lid.

- guide rail depth 470 mm
- waste capacity 31 (2 x 15.5) liters
- technology: full pull-out
- fitting: cabinet wall and front panel
- with soft retraction and damping
- installation depth 320 mm



[more infos...](#)

### Technical data

Article type	Waste collection system	Total volume	31 l
Height	360 mm	Volume/content container 1	15,5 l
Width	600 mm	Volume/content container 2	15,5 l
CE marking on the product	No	Soft closing	Yes
Mounting/Fixing	cabinet wall front panel	Colour container lid	anthracite/green
Cabinet width	600 mm	Design	Front pull-out system
Shape	angular	Volume/Content container	15,5/15,5
Installation depth	320 mm	Organic lid	Yes
Material container	plastic	Retractable total cover	Yes
Cover	Yes	Guide rail depth	470 mm
Lid type(s)	Complete lid	Biode lid bucket sizes	15.5 l
Number of containers	2	Locking mechanism	With damper
Opening technology	full pull-out		

### Accessories

8012344	Bio lid, Accessory, light grey, for 10/ 12/ 15.5 liters
---------	---

### Spare Parts

8012334	Cox <sup>®</sup> system container, Single bucket, light grey, 15,5 liters
---------	---

8013334	Cox <sup>®</sup> system container, Single bucket, anthracite, 15,5 liters
---------	---

8012346	Complete lid, Accessory, silver
---------	---------------------------------

8013346	Complete lid, Accessory, anthracite
---------	-------------------------------------

### Recommendations

8012309	Cox <sup>®</sup> Base single bucket, Single bucket, light grey
---------	--

8013309	Cox <sup>®</sup> Base single bucket, Single bucket, anthracite
---------	--

Installation dimensions (PDF)

