

Riva 4

Product number: 1014023

Configuration: stainless steel

Configuration options

1014023 | stainless steel

1041053 | set (sink and Drive 2 faucet)

- ✓ Built-in sink
- ✓ Eccentric set
- ✓ 3½" basket strainer valve flush

Built-in sink. With draining surface and half sink, reversible. 3½" basket strainer valve flush, rotational excenter fitting in the large bowl, half sink closeable.

— suitable for worktop thicknesses from 30 mm to 40 mm

— cut-out dimensions ca. 975 x 475 mm

— without half sink insert



[more infos...](#)

Technical data

Article type	Sink	Height main sink	210 mm
Height	316 mm	Depth main sink	410 mm
Width	1.000 mm	Maximum worktop material thickness	40 mm
Material	stainless steel	Material thickness worktop minimum	30 mm
Cabinet width	600 mm	Number of tap holes	1
Cut-out dimension	approx. 975 x 475 mm	Armature bench	Yes
Excenter fitting	Eccentric set	Number of holes	1
Valve type	3½" basket strainer valve flush	Arrangement sinks	Reversible
Overflow	with overflow	Number of sinks	1 main sink and 1 half sink
Installation variant	Built-in sink	Number of overflow points	1
Height half sink	130 mm	Draining board	With ribbed draining surface
Wide half sink	145 mm	Garnish actuation	Rotational excenter
Deep half sink	335 mm	half sink	Yes half sink closeable without half sink insert
Main sink width	342 mm		

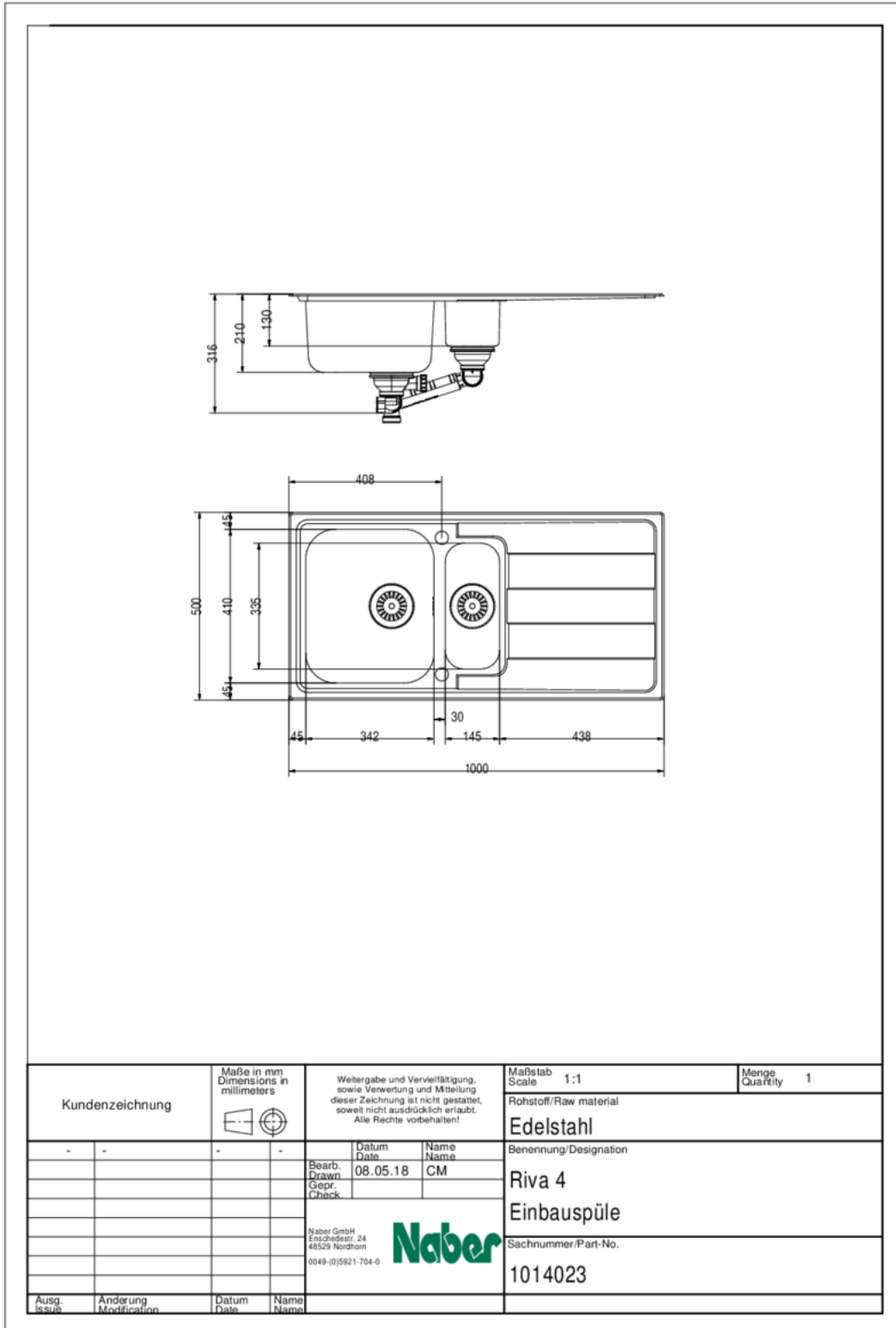
Spare Parts

1014091	Rotational excenter fitting, Drain fittings, 3½" basket strainer valve flush, for Riva 4
---------	--

Recommendations

5011064	Drive 2, Sink faucet, chrome, high pressure
1111141	Stainless steel system care, Cleaning agent,
1111142	Stainless steel cleaning agent Utral, Cleaning agent, 250 ml
1111143	Stainless steel care agent Edelglanz, Cleaning agent, 250 ml

Dimensional sketch (PDF)



Installation dimensions (PDF)

