

## Riva 4

Product number: 1014023

Configuration: stainless steel

### Configuration options

1014023 | stainless steel

1041053 | set (sink and Drive 2 faucet)

- ✓ Built-in sink
- ✓ Eccentric set
- ✓ 3½" basket strainer valve flush

Built-in sink. With draining surface and half sink, reversible. 3½" basket strainer valve flush, rotational excenter fitting in the large bowl, half sink closeable.

— suitable for worktop thicknesses from 30 mm to 40 mm

— cut-out dimensions ca. 975 x 475 mm

— without half sink insert



[more infos...](#)

### Technical data

Article type	Sink	Height main sink	210 mm
Width	1.000 mm	Depth main sink	410 mm
Material	stainless steel	Maximum worktop material thickness	40 mm
Cabinet width	600 mm	Material thickness worktop minimum	30 mm
Cut-out dimension	approx. 975 x 475 mm	Number of tap holes	1
Excenter fitting	Eccentric set	Armature bench	Yes
Valve type	3½" basket strainer valve flush	Number of holes	1
Overflow	with overflow	Arrangement sinks	Reversible
Installation variant	Built-in sink	Number of sinks	1 main sink and 1 half sink
Height half sink	130 mm	Number of overflow points	1
Wide half sink	145 mm	Draining board	With ribbed draining surface
Deep half sink	335 mm	Garnish actuation	Rotational excenter
Main sink width	342 mm	half sink	Yes half sink closeable without half sink insert

### Accessories

1014024	Chopping board, solid beech, 445 x 225 mm
1014014	Drip tray, Accessory, stainless steel, 342 x 410 mm
1014013	Half sink insert, Accessory, stainless steel

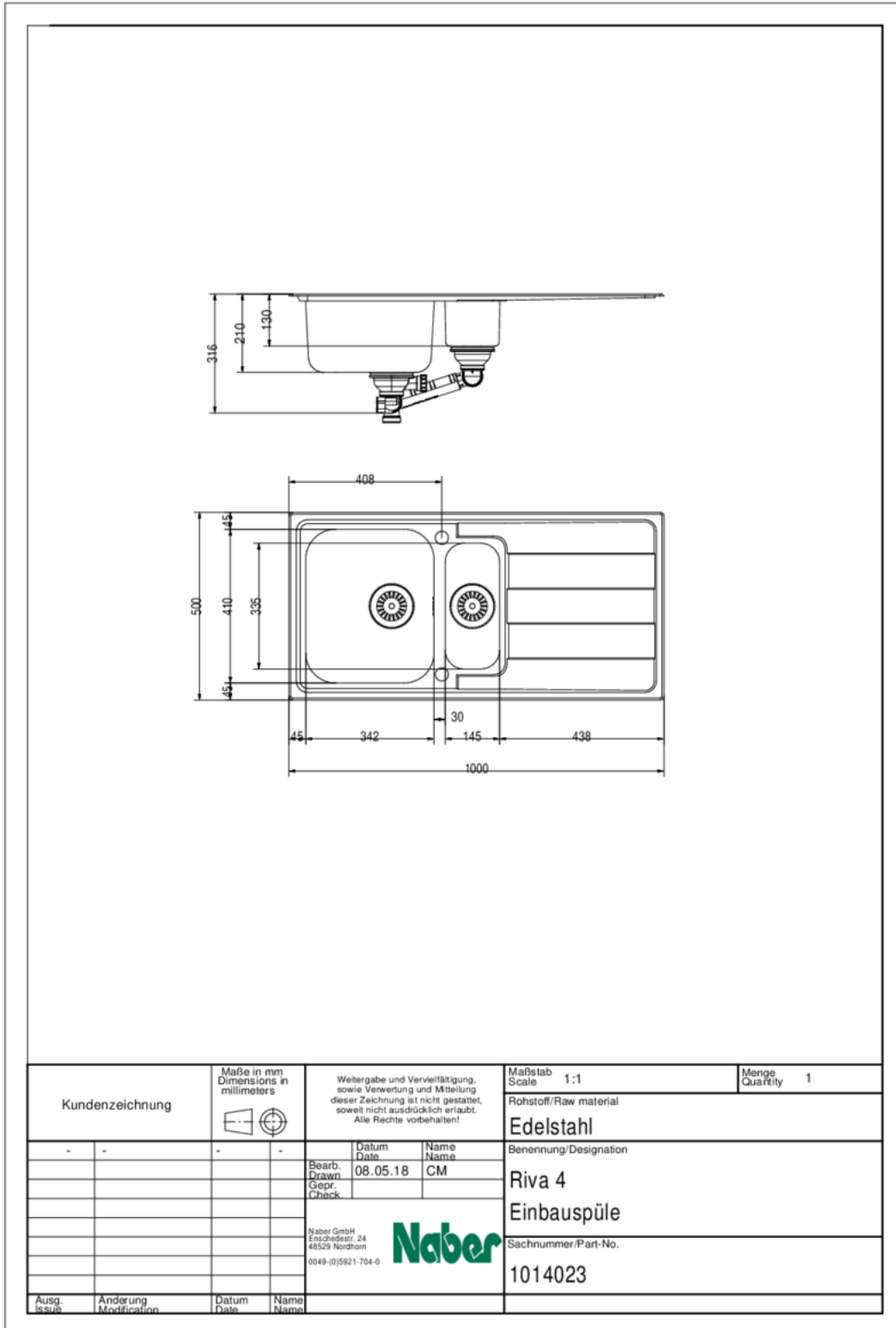
**Spare Parts**

1014091	Rotational excenter fitting, Drain fittings, 3½" basket strainer valve flush, for Riva 4
---------	--

**Recommendations**

5011064	Drive 2, Sink faucet, chrome, high pressure
1111141	Stainless steel system care, Cleaning agent,
1111142	Stainless steel cleaning agent Utral, Cleaning agent, 250 ml
1111143	Stainless steel care agent Edelglanz, Cleaning agent, 250 ml

Dimensional sketch (PDF)



Installation dimensions (PDF)

