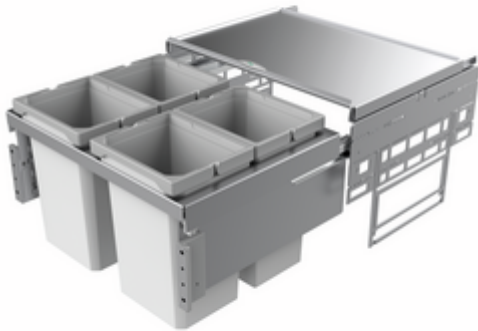


Cox[®] Base 360 S/600-4

Product number: 8012316

Configuration: without bio lid, light grey, H 360 mm



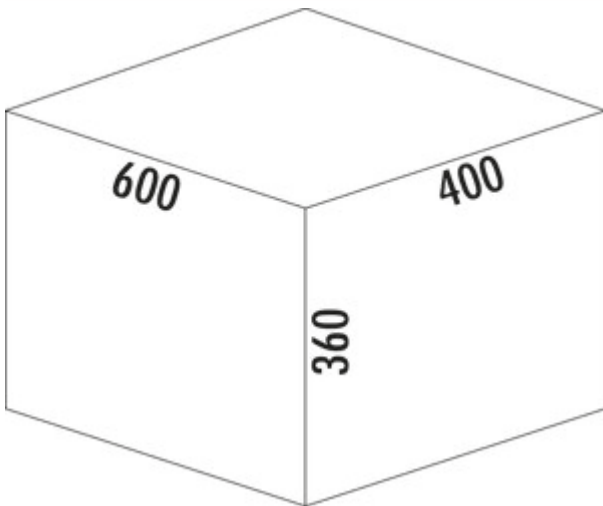
Configuration options

- 8012316 | without bio lid, light grey, H 360 mm
- 8012317 | with bio lid, light grey, H 360 mm
- 8013316 | without bio lid, anthracite, H 360 mm
- 8013317 | with bio lid, anthracite, H 360 mm

- ✓ Front pull-out system
- ✓ full pull-out
- ✓ 40 l

With pull-out complete lid.

- guide rail depth 470 mm
- waste capacity 40 (4 x 10) liters
- technology: full pull-out
- fitting: cabinet wall and front panel
- with soft retraction and damping



[more infos...](#)

Technical data

Article type	Waste collection system	Volume/content container 1	10 l
Width	600 mm	Volume/content container 2	10 l
CE marking on the product	No	Volume/content container 3	10 l
Mounting/Fixing	cabinet wall front panel	Volume/content container 4	10 l
Cabinet width	600 mm	Soft closing	Yes
Shape	angular	Colour guide	silver
Material container	plastic	Design	Front pull-out system
Colour total cover	silver	Volume/Content container	10/10/10/10
Cover	Yes	Organic lid	No
Lid type(s)	Complete lid	Retractable total cover	Yes
Number of containers	4	Guide rail depth	470 mm
Opening technology	full pull-out	Locking mechanism	With damper
Total volume	40 l		

Accessories

8011312	Bio-lid, Accessory, light grey, for 4/ 6/ 7/ 10/ 12.5 liters
8012368	Cox Cick-E® 600, Accessory, W 600 mm, dark grey/chrome matt
8011178	Bio-filter retrofitting set, Accessory, black
8013312	Bio-lid, Accessory, anthracite, for 4/ 6/ 7/ 10/ 12.5 liters

Spare Parts

8012320	Cox® system container, Single bucket, light grey, 10 liters
8010146	Complete lid, Accessory, silver
8013320	Cox® system container, Single bucket, anthracite, 10 liters
8013146	Complete lid, Accessory, anthracite

Recommendations

8012309	Cox® Base single bucket, Single bucket, light grey
8013309	Cox® Base single bucket, Single bucket, anthracite

Installation dimensions (PDF)

Pos.	Abbildung	Anz.	Benennung	Artikel-Nr.	Material	RAL
1		1	Rahmen silber 600, 400, 2a	8010148	DC01	9006
2		2	Montageplatte	8010007	ABS	7042
3		1	Gasemischel silber 600	8010146	DC01/DC12	9006
4		1	Schiene Glas Nova pro 459 L	8010026	Stahl verzinkt	
5		1	Schiene Glas Nova pro 459 R	8010026	Stahl verzinkt	
6		1	Frontblech L	8010150	Stahl verzinkt	7042
7		1	Abdeckung L	8010161	PA 6	7042
8		1	Frontblech R	8010150	Stahl verzinkt	7042
9		1	Abdeckung R	8010161	PA 6	7042
10		4	Ersatzblech hellgrau 10 L	8012320	PP + PA6 GF 30%	7047 + 7042
11		4	Möbelverschraubung		Stahl verzinkt	
12		4	Müller		Stahl verzinkt	
13		4	Anreißerschraube	8010155	Zink-Durchzug	

Kundenzzeichnung

MAßSTAB 1:3

Bestellnummer: **8012316**

Produktbeschreibung: **Cox Base 360 S_600_4**

Naber Produktionsstandort