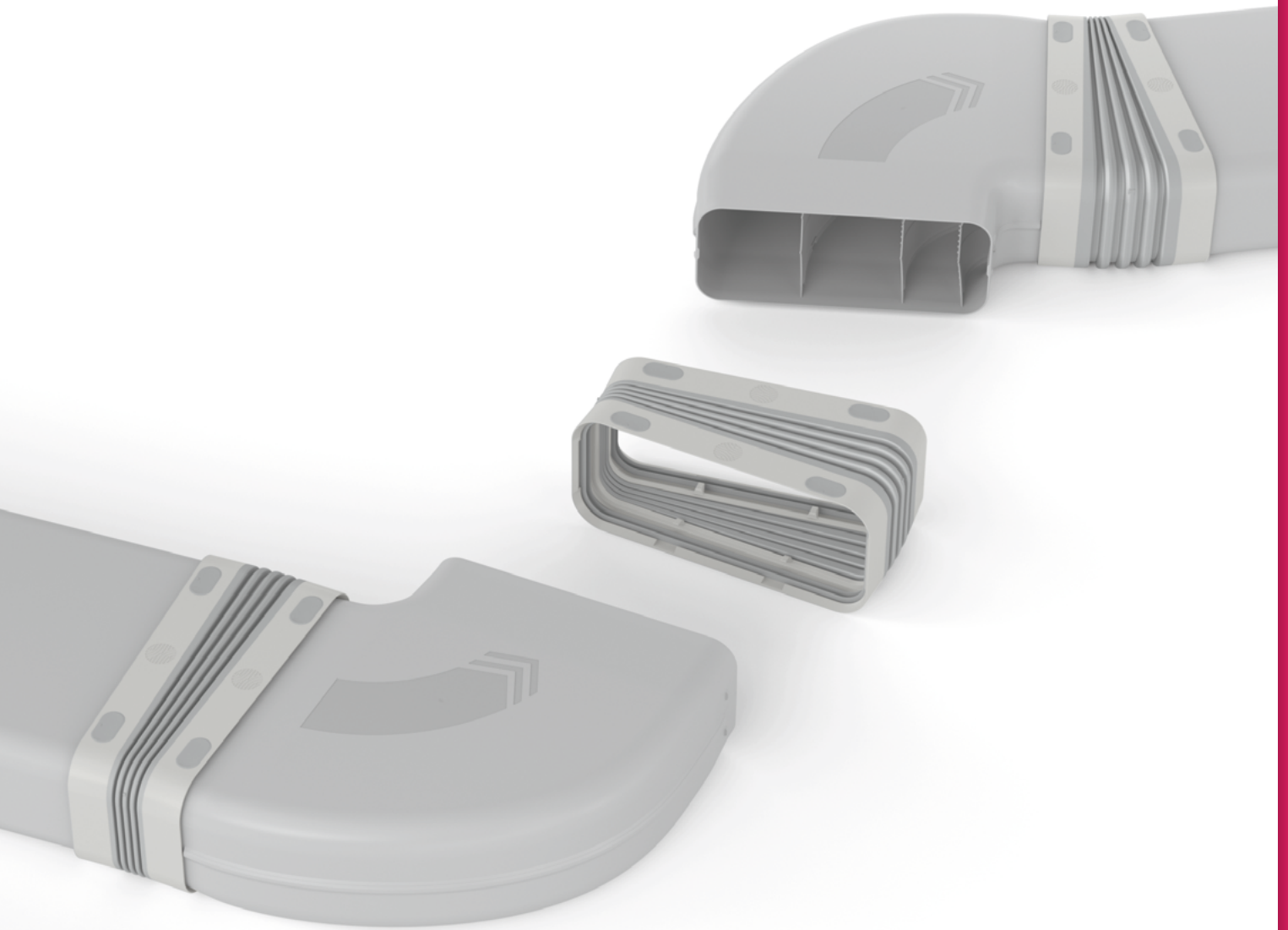


COMPAIR® Ventilation technology

COMPAIR PRIME flow®



Quantum leap in
ventilation technology!

Naber®
... inspires!



Ventilation technology

COMPAIR PRIME flow®

- Maximum innovation.
- Maximum efficiency.
- Maximum airtightness.
- Maximum ease of installation.

COMPAIR® Ventilation technology

COMPAIR PRIME flow®

The most advanced system for kitchen ventilation. Designed for exhaust air, recirculating air, all extractor systems.

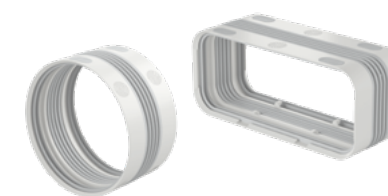
The new benchmark – worldwide!



Efficiency in an elegant package

With **COMPAIR PRIME flow®** kitchen ventilation is optimally connected. For a pleasant and safe cooking environment. Every day.

Naber is redefining the standard in ventilation systems for cooker hoods. **COMPAIR PRIME flow®** combines the creativity, knowledge and experience of the world market leader. In every category, Naber has made kitchen ventilation better, more efficient and easier to install. Completely new, from wall conduct shell assembly to whisper-quiet operation. Plus: Ecological product design and socially responsible manufacturing significantly increase sustainability.



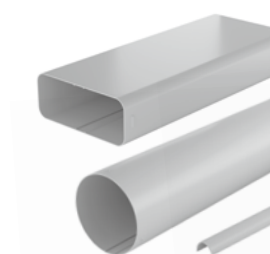
COMPAIR PRIME flow®
Universal connectors



COMPAIR PRIME flow®
Bends



COMPAIR PRIME flow®
Wall conduct rough-in kit



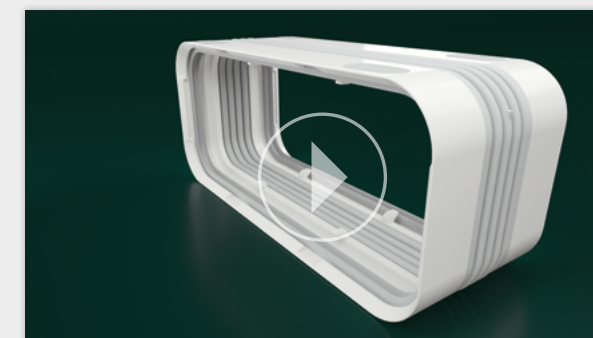
COMPAIR PRIME flow®
Pipe sections & cable duct

COMPAIR PRIME flow® – the video

This is the ingenious simplicity of **COMPAIR PRIME flow®**. Scan QR code or view on naber.com!



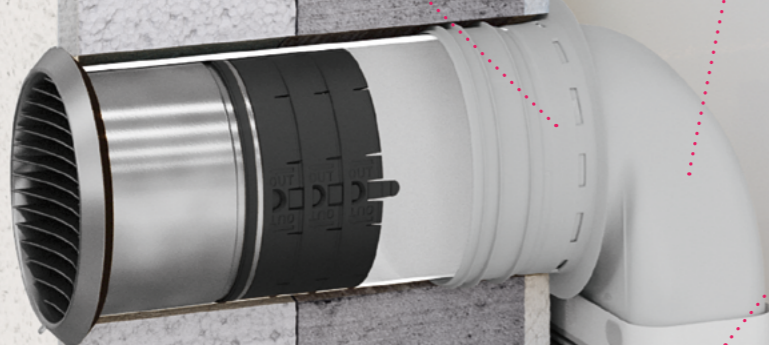
→ naber.com/compair-prime-flow-video



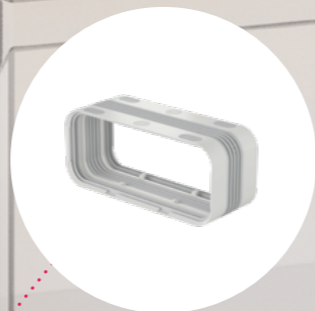
One system. Always a solution. For every appliance.

As usual with Naber, the **COMPAIR PRIME flow®** is also consistently thought through to the end. Each part fulfils its task perfectly to elevate the kitchen ventilation system to perfection, regardless of the manufacturer. Regardless of the floor plan, the extractor hood or the type of installation – kitchen buyers always receive the optimum solution for the best possible comfort and maximum efficiency. Kitchen fitters benefit from the unrivalled ease, speed and safety of assembly.

Wall connection sleeve with 3-lip seal
Sealed all round, without silicone, without tools. The 3-lip seal perfectly seals the core hole on the inside wall side. For a securely airtight building envelope and maximum energy efficiency.



Wall connection
Whether round or flat, curved or straight. Insert air duct, fits, sealed!



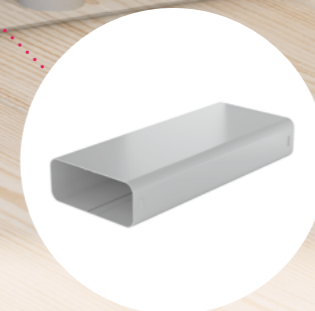
Universal connectors
Push on until it clicks, done: sealed, flexible, safe! And without the hassle of working with adhesive tape.



Connection to extractor system
Perfect airflow right from the start. For the best possible capture of cooking vapours even at low fan speeds.



Pipe bends
Flat or round: always with minimal flow resistance. Enables a new level of performance through bionic design and new, innovatively designed air guide bodies.



Air duct
New with optional support bar for flat ducts and additional cable duct which can be fitted integrally.

Wall conduct rough-in set P-RBS

Each **COMPAIR PRIME flow®** wall conduct set includes a separately packaged rough-in kit. This is as innovative as it is simple. The new wall connection sleeve fixes the pipe securely in the core hole. **Airtight, without silicone and completely without tools!** Cleverly designed with flush-plastered edge and alignment aid. Later, the kitchen fitter simply removes the hard foam plugs and installs the extractor system and the external blind with the proven energy-efficient **THERMOBOX** heat retention system in a clean, dust-free pipe.



Without gluing and screwing



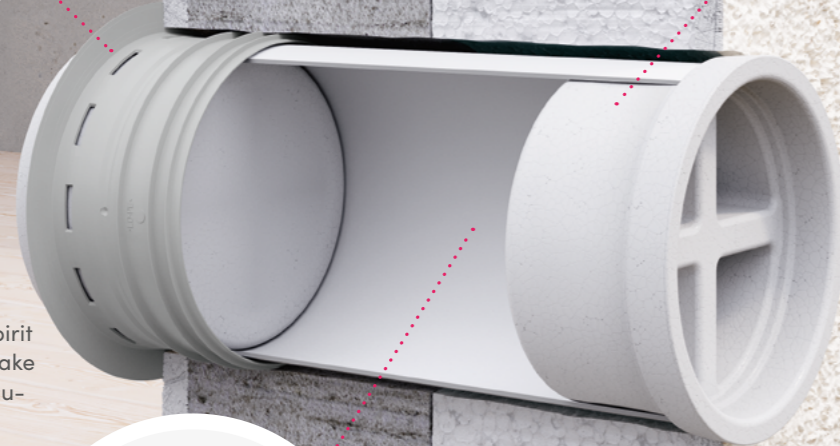
Airtight and clean



For a flush-plastered finish inside and outside

Hard foam plugs inside and outside protect against dust and dirt during the roughing and finishing phase. With flush-plastered edge for precise work inside and outside.

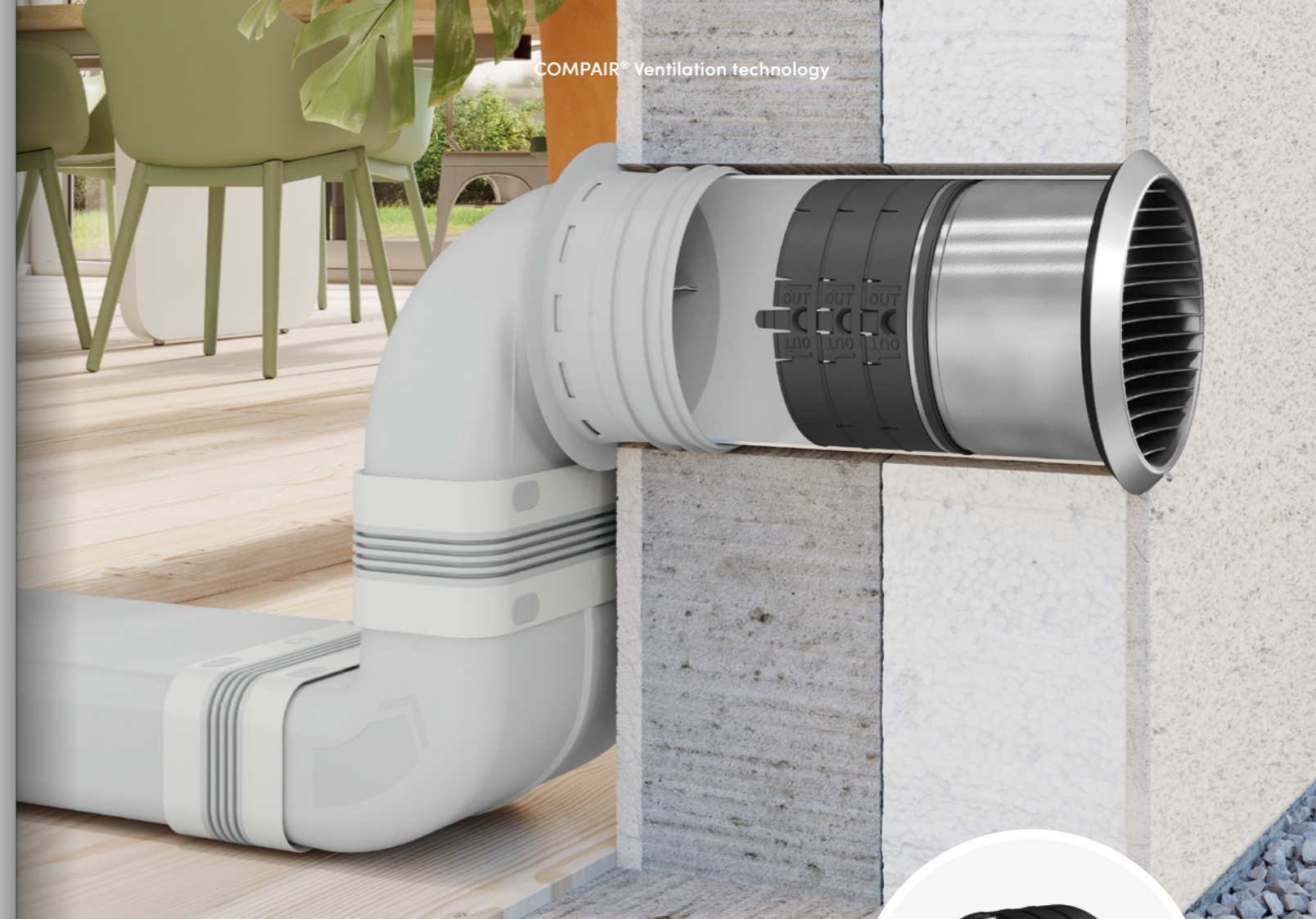
Wall connection sleeve with 3-lip seal fixes and seals the pipe of the wall conduct to the inner wall.



Alignment aids
Support points for the spirit level on the front side make correct alignment particularly easy.



Continuous plastic pipe avoids thermal bridges.



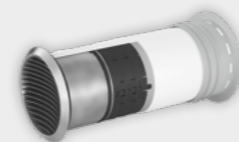
THERMOBOX
Energy-efficient heat retention system

Wall conduct: beautiful, efficient, simple

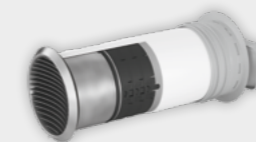
Every **COMPAIR PRIME flow®** wall conduct is an all-round worry-free solution. Complete with energy-saving mechanical **THERMOBOX** and beautifully designed, weatherproof external blind in two award-winning designs. **THERMOBOX** and external blinds are simply pushed in from the outside, fit perfectly and are airtight and rainproof thanks to integrated seals without the need for any further sealant. For horizontal flat duct connection, the wall connector **P-MAS 150** is available.

Four wall conduct sets available

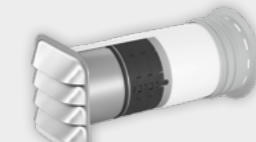
Each with roughing kit (P-RBS), stainless steel blind, **THERMOBOX** and optional wall connector P-MAS 150.



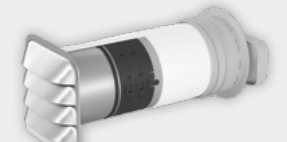
P-Turbo 150 wall conduct
incl. **THERMOBOX**
Art. no. 4051064



P-Turbo flow 150 wall conduct
incl. **THERMOBOX**
Art. no. 4051065



P-E-Jal Col 150 wall conduct
incl. **THERMOBOX**
Art. no. 4051066



P-E-Jal Col flow 150 wall conduct
incl. **THERMOBOX**
Art. no. 4051067

The universal connector. Simply ingenious. Ingeniously simple.

No more hassle with tape in or under hard-to-reach kitchen cabinets. Always a permanently tight air duct system with maximum efficiency. And with built-in flexibility. This is the new and unique universal connector from **COMPAIR PRIME flow®**. The heart of the system makes air duct installation easier and safer than ever before. Plug in, engage, click – done!



Sealed without adhesive tape



Connect securely with N-click system

Universal connectors flat & round

Whether flat or round: The double, permanently elastic 2-lip seal always seals the connections cleanly and perfectly. Latching elements hold the duct walls securely in the seal.

Compensator for high flexibility.

P-UVR 150 Universal connector
Art. no. 4051024

P-UVB 150 Universal connector
Art. no. 4051004

Snap-in recess for secure connection.

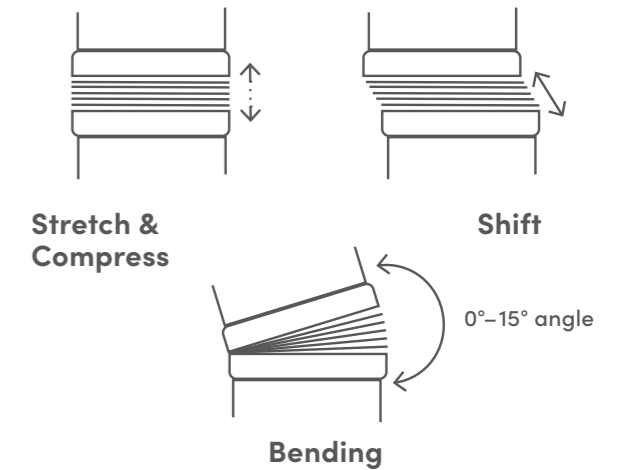
2-lip seal for airtight installation (fulfils at least tightness class ATC 3 according to DIN EN 16798 in the system structure).

Grip and support points
Soft, slightly raised grip and support points provide a secure hold and reduce the transmission of structure-borne sound through adjacent surfaces.

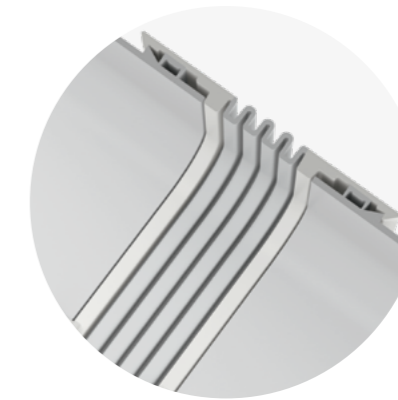
Strong, flexible, sealed!

The universal connector from **COMPAIR PRIME flow®** achieves the seemingly impossible: It makes rigid air ducts flexible, while at the same time providing the best aerodynamic properties. For optimum energy efficiency and high installation convenience.

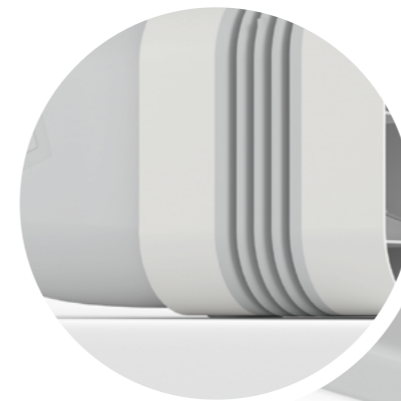
The best thing for assembly is the mobility built into each universal connector. The flexible compensator allows changes in any direction up to 15 degrees. This makes it easy to achieve slight offsets.



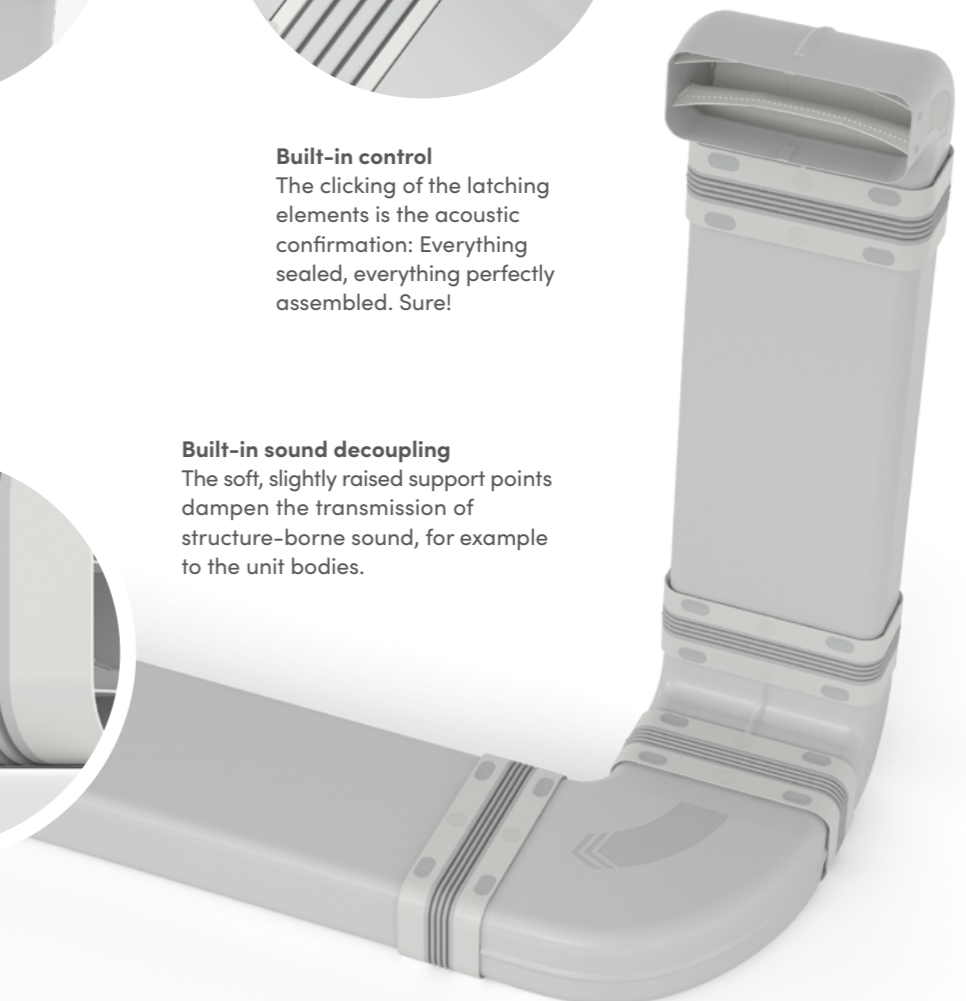
Built-in problem solver
The flexible compensator makes many daily assembly problems simply disappear.



Built-in control
The clicking of the latching elements is the acoustic confirmation: Everything sealed, everything perfectly assembled. Sure!



Built-in sound decoupling
The soft, slightly raised support points dampen the transmission of structure-borne sound, for example to the unit bodies.



Aerodynamics in a new dimension

Comprehensive 3D simulations give **COMPAIR PRIME flow®** bends and deflectors unprecedented efficiency. There's no better way to control moving air! The bionic expansion of the tube cross-sections and the special shape of the air guide bodies ensure the lowest possible resistance through optimal air flow. For maximum air performance, quiet operation and minimal extraction electricity costs.



Highest efficiency, minimum power consumption



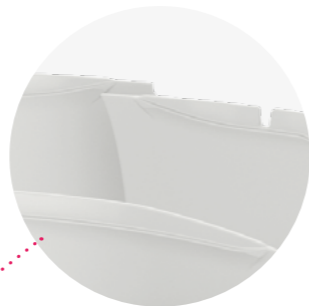
High air volume even at low wattages



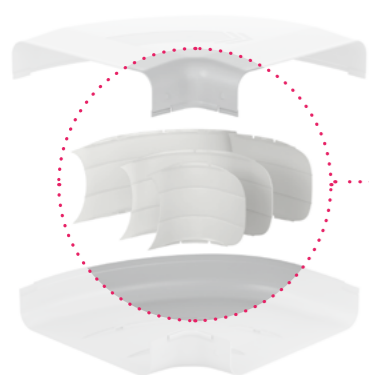
Fit for future efficiency targets

High tech for kitchen ventilation

Booster
The slit flap prevents the performance-reducing turbulence of the air flow.



Concave inlet
directs the air away from the enclosure surfaces, thus reducing friction.

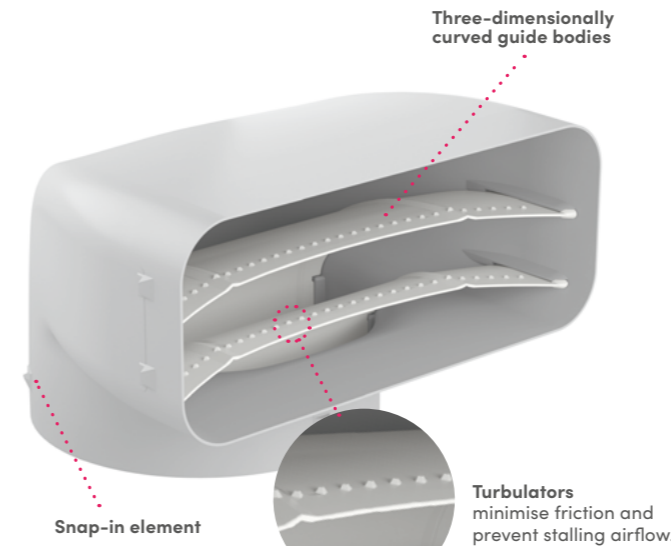
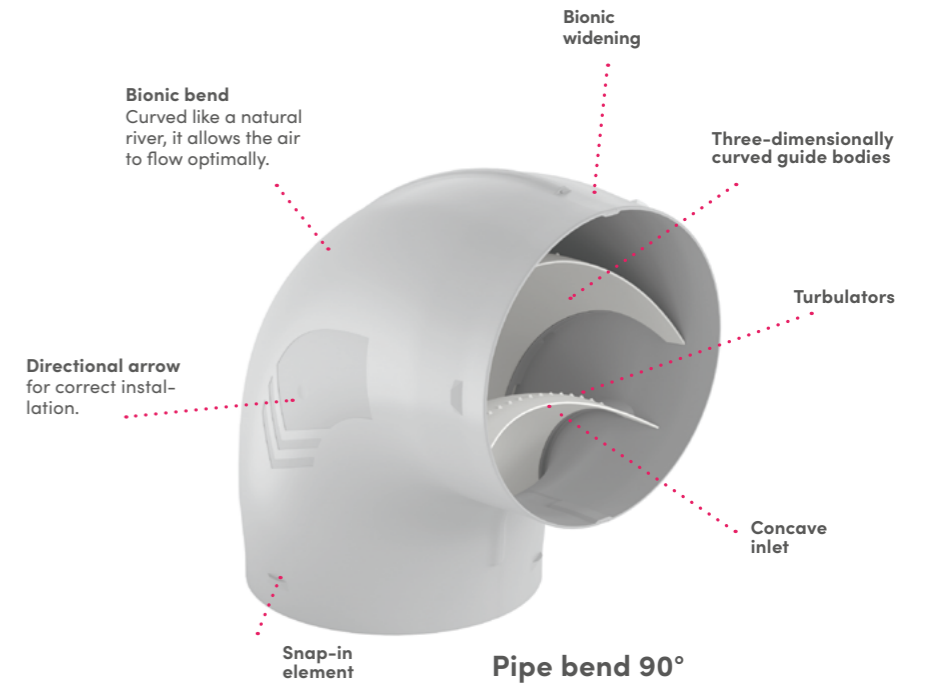


P-RBH 150 Pipe bend horizontal 90°
Art. no. 4051006

Convex outlet
The elongated guide bodies smooth the air flow as it enters the ventilation duct.

More than just a bend

The **COMPAIR PRIME flow®** pipe bends and deflectors incorporate the latest technology from the aerospace industry. The fittings are very easy to assemble.

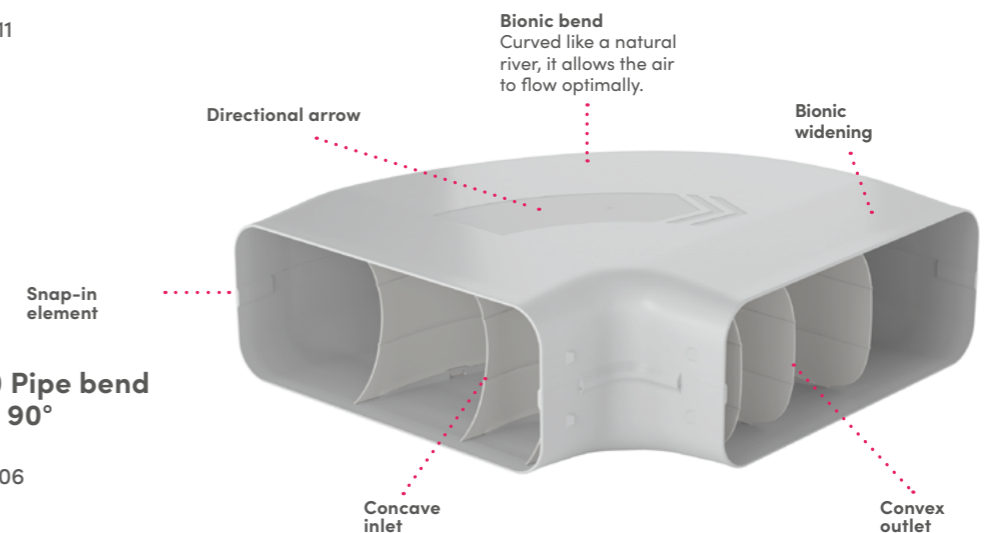


- **Directional arrows** on the housing for error-free assembly
- **Three-dimensionally curved, concave and convex guide bodies** for optimum flow behaviour
- **Bionically designed housing** prevents air stagnation
- **Turbulators** prevent flow separation and ensure optimum air flow
- **Snap-in elements** securely connect the moulded parts to the universal connector

Art. no. 4051011

P-RBH 150 Pipe bend horizontal 90°

Art. no. 4051006

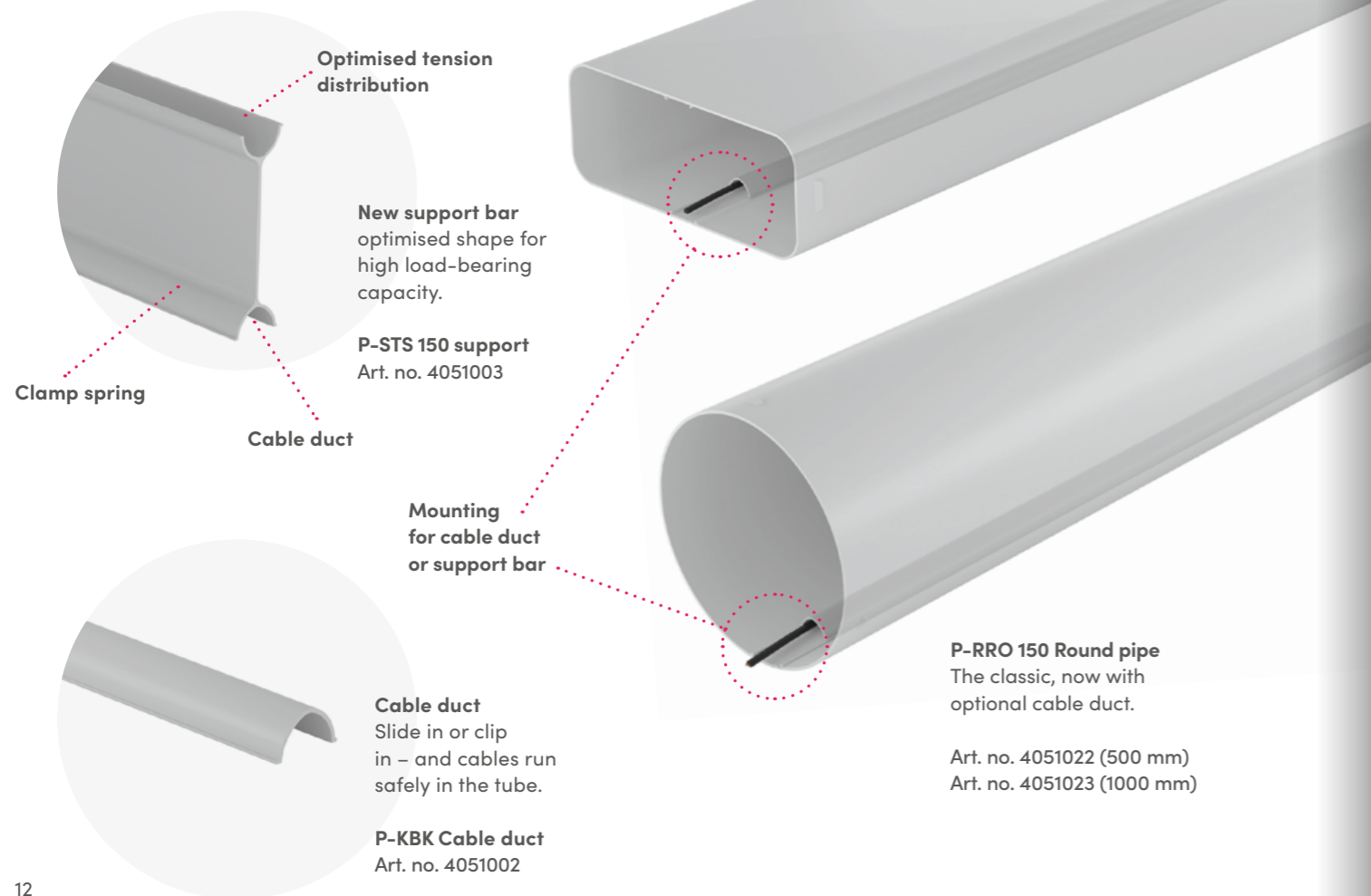




Intelligent air duct update

Round or flat? Doesn't matter! Because both types need a perfect air duct system. Like **COMPAIR PRIME flow®**. In the usual dimensions of 150 mm diameter or 222 x 89 mm, the further development has key advantages: Latching elements for secure contact with the universal connector, integrated cable management for power and data cables if required and a new type of support bar for the flat ducts. This increases the compressive strength and allows installation under the screed. For example, with freestanding kitchen islands.

Perfectly matched

Whether under the screed, freely on the floor, in the cabinet or on the kitchen ceiling: **COMPAIR PRIME flow®** is equipped for any design and for almost any purpose.






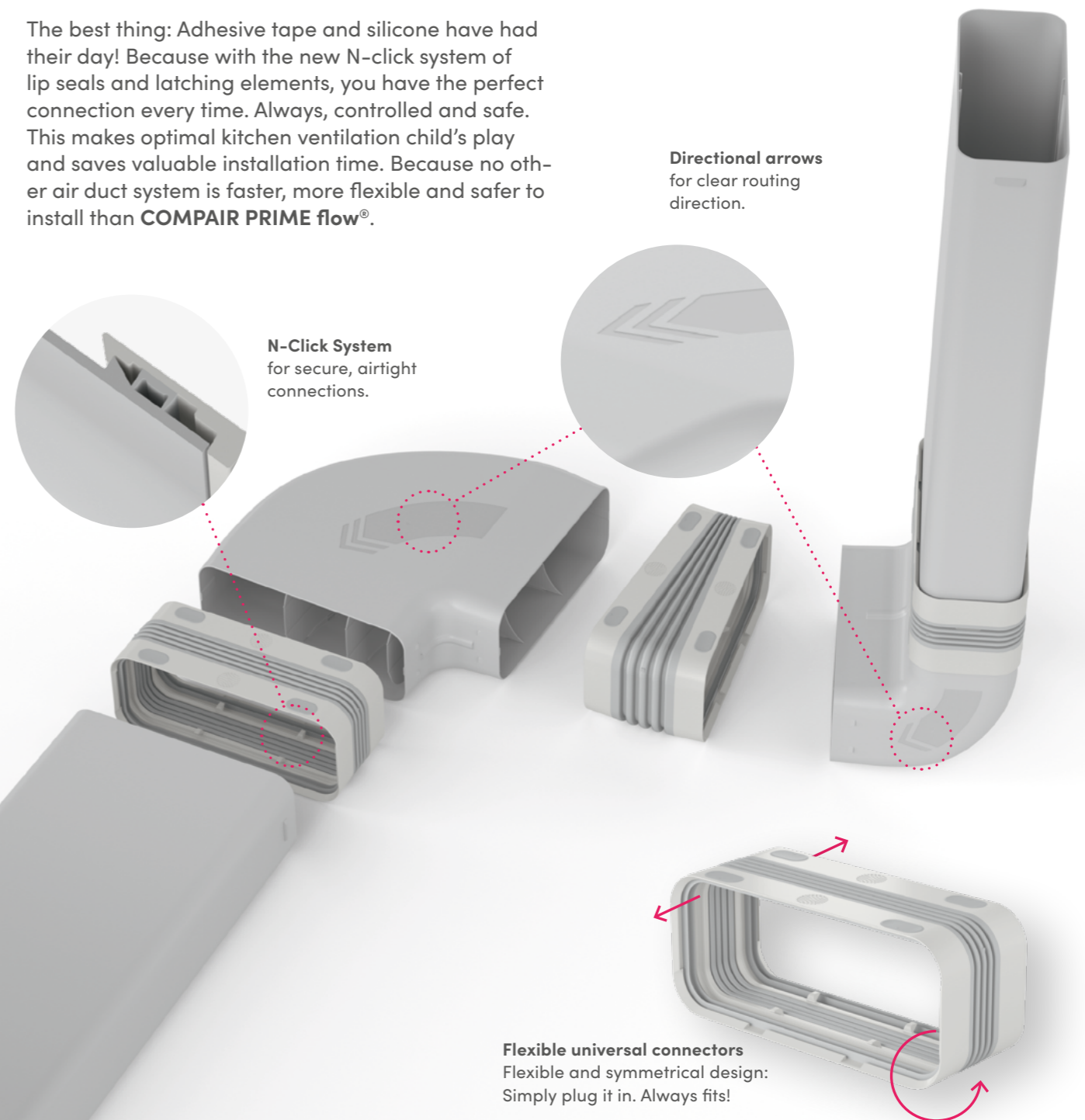
-  **For all areas of application**
-  **Cable duct integrated**

Assembly has never been easier




The assembly of **COMPAIR PRIME flow®** follows a simple and clear logic. Clear directional arrows on the bend indicate the installation direction. Errors are virtually impossible. All construction parts fit together clearly, securely and airtight. Assemblies can be pre-assembled if required. And the universal connectors, which are flexible in all directions, master almost every challenge, even in demanding installation situations.

The best thing: Adhesive tape and silicone have had their day! Because with the new N-click system of lip seals and latching elements, you have the perfect connection every time. Always, controlled and safe. This makes optimal kitchen ventilation child's play and saves valuable installation time. Because no other air duct system is faster, more flexible and safer to install than **COMPAIR PRIME flow®**.

-  **Pushing instead of bonding**
-  **For exhaust air and recirculation**
-  **For all extractor systems**



Naber – solutions competence in a system

System	COMPAIR PRIME flow®	COMPAIR STEEL flow®	COMPAIR® flow
			
Description	The aerodynamically optimised COMPAIR PRIME flow® system made of plastic is installed directionally. Universal connectors with integrated seal and maximum flexibility make installation especially easy. Optional support bars for the flat ducts allow installation in the floor structure.	The air duct system made of galvanised sheet steel combines unique properties with a special design. The fire-safe material and the integrated support bar open up new application possibilities, for example installation within the floor structure. Perfect also for visible mounting in industrial design.	The well-known and proven plastic air duct system with good flow behaviour and efficient cross-sections ensures high air performance. Suitable for many applications and extractor systems.
System size			
125 mm	–	–	✓
150 mm	✓	✓	✓
System format			
Flat duct	✓	✓	✓
Round pipe	✓	✓	✓
Routing options			
on floors/cabinets	✓	✓	✓
under the ceiling	✓	✓	✓
in the floor structure	✓	✓	–
Integrated cable management	✓	–	–
Mounting/Connection	★ ★ ★	★	–
Air density of the components	★ ★ ★	★	–
Fire protection	★ ★	★ ★ ★	★

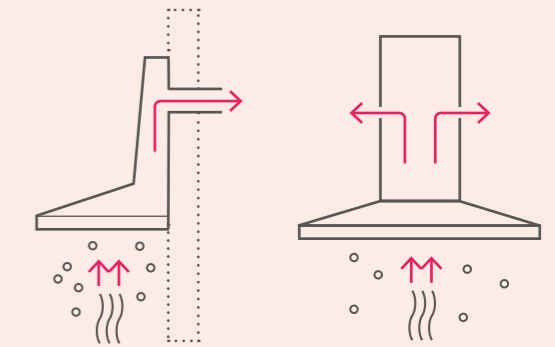
Exhaust air or recirculation? And what about downdraft?

Every extractor fan needs a perfect air duct system. Exhaust air has advantages in terms of hygiene, efficiency and noise reduction. Recirculated air systems are somewhat easier to install, but the follow-up costs and time required for regular filter replacement are higher.

Technically challenging are downward-suction trough fans. After all, cooking fumes flow upwards first. The ventilation system must capture this in the best possible way and filter it safely with the lowest pressure loss or lead it outside.

Naber has the perfect solution for every requirement. Technically sophisticated, tried and tested, optimal in terms of energy efficiency and comfort.

Exhaust vs. Recirculation



Out of the house
An exhaust air system conveys the extracted cooking fumes from the extractor hood completely outdoors via a pipe and a wall conduct.

Circular motion
A recirculation system partially filters grease and odours out of the cooking vapours and routes the air back into the room. This variant does not remove moisture at all.

Everything you need to know about the perfect extractor fan.

Moving air is complex, even in the kitchen. To plan the perfect extractor hood, Naber provides the results of a detailed study in compact format and free of charge. Download at → naber.com



Download at
→ naber.com/plan-kitchen-ventilation-systems-with-scientific-support/



Exhaust air or recirculated air – the video

The advantages and disadvantages in moving pictures. Simply scan the QR code or take a look at naber.com.



→ naber.com/recirculation-or-exhaust-system-video/

The service website

→ compair-flow.com provides answers to all questions about kitchen ventilation. Whether professionals are designing a kitchen, have questions about installation and assembly, or end consumers are looking for the perfect ventilation technology for their kitchen.

From there, you can go directly to all Naber products with exact information on each item.



Naber GmbH
Development · Production · Distribution

Enschedestraße 24
48529 Nordhorn
Germany

Phone + 49 5921 704 - 0
Fax + 49 5921 704 -197

naber@naber.com
www.naber.com

09/2022 E

Naber – the original

All the major manufacturers of extractor systems worldwide rely on Naber ventilation systems and components. With Naber, kitchen professionals find solutions for almost every planning and installation task. The in-house development department regularly devises technically and creatively ground-breaking products that make kitchens the world over a little better, more comfortable and more efficient.